

Glasgow School of Art Programme Specification

Programme Title: BA (Hons) Silversmithing & Jewellery Design

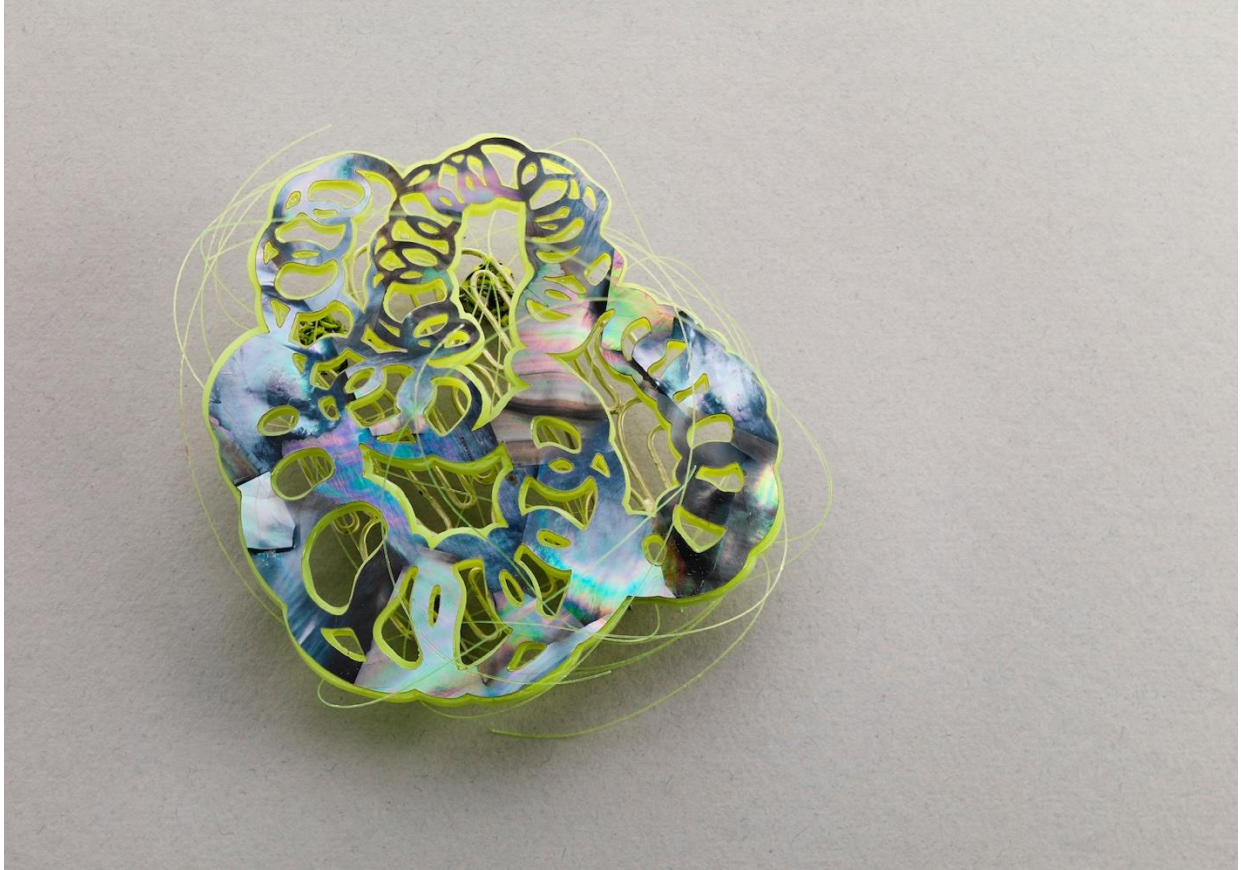


Image: Niamh Wright

Please note that this programme specification is correct on the date of publication but may be subject to amendment prior to the start of the 2025-26 Academic Year.

1. Programme Details	
Programme Title	BA (Hons) Silversmithing & Jewellery Design
School	Design
Programme Leader	Anna Gordon
Award to be Conferred	BA (Hons) Silversmithing & Jewellery Design
Exit Awards	Stage 1 Certificate of Higher Education Stage 2 Diploma of Higher Education Stage 3 BA Silversmithing & Jewellery Design Stage 4 BA (Hons) Silversmithing & Jewellery Design
SCQF Level	7-10
Credits	480
Mode of Study	Full-Time
HECOS Code	

Academic Session	2025-26
Date of Approval	Programme Approval February 2024

Awarding Institution	University of Glasgow
Teaching Institutions	The Glasgow School of Art
Campus	Reid Building, Garnethill
Lead School/Board of Studies	School of Design
Other Schools/Board of Studies	N/A
Programme Accredited By (PSRBs)	N/A

2. Entry Qualifications	
Highers	Standard: ABBB, including a literate subject Minimum: BBCC, including a literate subject
A Levels	Standard: ABB and GCSE English at A/7 grade or above Minimum: BBC and GCSE English at A/7 grade or above
Other	International Baccalaureate: 30 points overall in the Diploma, including 18 at Higher Level, normally including English and Maths. Irish Leaving Certificate: Four Highers at H2 or above - subjects required as per Scottish Highers. Other eligible qualifications for entry include Foundation Diplomas in Art & Design, Higher National Certificates (HNC), Higher National Diplomas (HND), Foundation Degrees, Level 3 Diplomas, and other Further Education and Higher Education qualifications in related subjects. Entrants may begin their studies in Stage 2 or Stage 3 depending on the level of prior qualifications and other entry criteria. Detailed information about the required grades for individuals holding or studying these qualifications can be access on the website.

	<p>Applicants from outside the UK and Ireland should also consult our international student pages for details of accepted qualifications from specific countries.</p> <p>Applicants who do not meet entry requirements through formal qualifications but can demonstrate experience, skills and abilities at the appropriate level can also be considered.</p> <p>Additional entry requirements: Applicants are normally required to submit a portfolio or work and may be required to attend an Interview as part of their admissions assessment.</p>
<p>English Language Requirements</p>	<p>Applicants who are not a national of, nor have obtained a degree in one of the countries on the approved UKVI exemption list or those who require a Student Visa, will need to provide evidence of their English language ability.</p> <p>GSA's preferred test is the IELTS for UKVI (Academic) test taken at a UKVI approved test centre. GSA require all students, who require a student visa, to meet the following requirements to gain entry:</p> <ul style="list-style-type: none"> • IELTS for UKVI Academic with an overall score of 6 with a minimum of 5.5 in all components. • An alternative Accepted English Language Test which can be found on the Postgraduate 'How to Apply' page of the GSA website.

3. Programme Introduction

The award-winning BA (Hons) Silversmithing and Jewellery Design programme nurtures a dynamic, inclusive, and supportive learning environment that provides a balanced and specialist learning experience covering body adornment and fine metalworking aspects, from developing original design concepts to finely crafted finished work.

The programme embraces a broad approach to silversmithing and jewellery, from designing for commercial jewellery or silverware industries to pursuing personal and highly individual works intended for gallery exposure. The programme encourages links with manufacturing jewellers and individual makers, gallery curators and collectors, and live projects and competitions, helping students explore potential fields of interest and employability while developing graduate skills and attributes.

Within the programme, Studio courses provide a series of incremental project-based experiences with opportunities to reflect upon learning as it develops towards building a critical practice. Design History and Theory courses explore critical and contextual perspectives, and courses shared with

other programmes, including Co-Lab and Design Domain, foster expanded perspectives by connecting broader domains of learning and knowledge. Opportunities for student international exchanges, collaborative learning, live projects, competitions, and careers and enterprise experiences help support how students develop graduate skills and attributes.

4. Programme Aims

The aims of this programme are to:

1. equip graduating students with the curiosity and creative skills to sustain life-long learning.
2. encourage imagination, innovation, reflection and risk-taking within design practices.
3. develop critical, practical, and technical skills to provoke new insights and to expand the discipline of Silversmithing and Jewellery.
4. build personal and professional skills to enable independent and collaborative learning.
5. engage with ethical practices and socially responsible design that respects people and the environment.
6. Develop professional communication skills to exchange, present ideas, and interests with a variety of audiences.

5. Programme Intended Learning Outcomes

After full participation in and successful completion of the programme, students will be able to:

1. inform and enrich their silversmithing and jewellery practice through contextual research skills.
2. speculate, through structured experimentation and play, generating ideas and employing critical reflection through the design process
3. apply analytical, critical, and technical skills appropriate to their silversmithing & jewellery design interests.
4. manage their learning, working both independently and in collaboration with peers, GSA staff and external partners.
5. critically engage in complex ethical, societal, and environmental discourse, within and out with the discipline of silversmithing and jewellery design
6. communicate to a range of audiences, including peers, staff and partners engaging with perspectives and professional practices.

6. Description of Learning and Teaching Approaches

A variety of teaching and learning approaches are employed to support student engagement with the curriculum and the achievement of the intended learning outcomes. As an indication, these include:

- briefings

- inductions and demonstrations
- technical workshops
- studio activities
- individual and group tutorials
- talks, lectures, seminars, and study visits
- group critiques and reviews, peer review, and presentations
- presentations and writing
- student showcases
- reflection and self-evaluation

Skills, including digital, material and technical resources, are introduced through inductions, demonstrations, and workshops.

Independent learning skills will be developed and supported through guided activities and digital online learning resources available on Canvas.

A variety of teaching and learning approaches, including in person, blended and online learning and delivery, are employed to support student engagement with the curriculum and the achievement of the intended learning outcomes.

7. Description of Assessment Methods

Formative assessment offers students the opportunity to obtain ongoing tutor and peer feedback through the development of their summative submissions over the length of each course. Students are supported in their learning through a range of formative activities with staff and peers, such as workshops, reviews and tutorials offering ongoing formative feedback as they progress through each course within this programme.

Summative Assessment is designed to support students to review, collate and communicate work produced in response to project briefs and learning and teaching activities associated with the programme and its courses.

Submissions will be assessed and moderated in line with the Code of Assessment.

8. Programme Structure

Year 1

Course	Credits	SCQF Level	Semester	Course Code
Studio 1A	40	7	1	
Co-Lab	20	7	1	
Studio 1B	40	7	2	
Design Objects, Ideas, Contexts, Histories	20	7	2	
Total Stage Credits	120			

Year 2

Course	Credits	SCQF Level	Semester	Course Code
Studio 2A	40	8	1	
Design History and Theory 2A	10	8	1	
Design Domain 2A	10	8	1	

Year 2				
Course	Credits	SCQF Level	Semester	Course Code
Studio 2B	40	8	2	
Design History and Theory 2B	10	8	2	
Design Domain 2B	10	8	2	
Total Stage Credits	120			

Year 3				
Course	Credits	SCQF Level	Semester	Course Code
Studio 3A	40	9	1	
Design History and Theory 3A	10	9	1	
Design Domain 3A	10	9	1	
Studio 3B	40	9	2	
Design History and Theory 3B	10	9	2	
Design Domain 3B	10	9	2	
Total Stage Credits	120			

Year 4 Option 1				
Course	Credits	SCQF Level	Semester	Course Code
Studio 4	80	10	1 & 2	
Design History and Theory 4 (40)	40	10	1 & 2	
Total Stage Credits	120			

Year 4 Option 2				
Course	Credits	SCQF Level	Semester	Course Code
Studio 4	80	10	1 & 2	
Design History and Theory 4 (20)	20	10	1	
Extended Design: Reflective Encounters	20	10	2	
Total Stage Credits	120			

9. Outgoing Exchange and Visiting Student Arrangements

BA (Hons) Silversmithing & Jewellery Design students can apply to undertake a period of exchange with one of GSA's international partner institutions. International exchanges will normally take place in Stage 3 of study and be for the duration of one full semester, either Semester 1 or Semester 2. BA (Hons) Silversmithing & Jewellery Design welcomes incoming exchange students studying at a registered exchange partner who may apply to GSA for a period of exchange, usually one full semester, either Semester 1 or Semester 2.

Study Abroad (Visiting Students) is open to applications for full-year, Semester 1, and Semester 2 entry on Stage 2 and Stage 3 of the BA (Hons) Silversmithing & Jewellery Design programme. Study Abroad students will be entered into the most appropriate year entry point based on their portfolio and application.

Year 2 Exchange and Visiting Student Courses				
Course	Credits	SCQF Level	Semester	Course Code
Studio 2A	40	8	1	
Design History and Theory 2A	10	8	1	
Design Domain 2A	10	8	1	

Year 2 Exchange and Visiting Student Courses				
Course	Credits	SCQF Level	Semester	Course Code
Studio 2B	40	8	2	
Design History and Theory 2B	10	8	2	
Design Domain 2B	10	8	2	

Year 3 Exchange and Visiting Student Courses				
Course	Credits	SCQF Level	Semester	Course Code
Studio 3A	40	9	1	
Design History and Theory 3A	10	9	1	
Design Domain 3A	10	9	1	
Studio 3B	40	9	2	
Design History and Theory 3B	10	9	2	
Design Domain 3B	10	9	2	

10. Relevant QAA Subject Benchmark Statements and Other External Reference Points

Subject Benchmark Statements describe the nature of study and the academic standards expected of graduates in specific subject areas. For further information relevant to this programme see:

QAA (2019) *Subject Benchmark Statement: Art and Design*. Gloucester: QAA. Available from: https://www.qaa.ac.uk/docs/qaa/subject-benchmark-statements/sbs-art-and-design-17.pdf?sfvrsn=71eef781_22

11. Programme Regulations and Requirements for Progression

All GSA Degree programmes are validated by the University of Glasgow and the GSA's Programme Regulations are published in the [University of Glasgow University Regulations](#).

These regulations include the requirements in relation to:

- (a) Award of the degree
- (b) Progression requirements
- (c) Early exit awards

In referring to regulations for degree programmes, students should consult the University Regulations which were in force in the academic session in which they first registered for the degree programme in question.