

# Equality Monitoring Report: Students

**THE GLASGOW  
SCHOOL OF ART**



2014-15

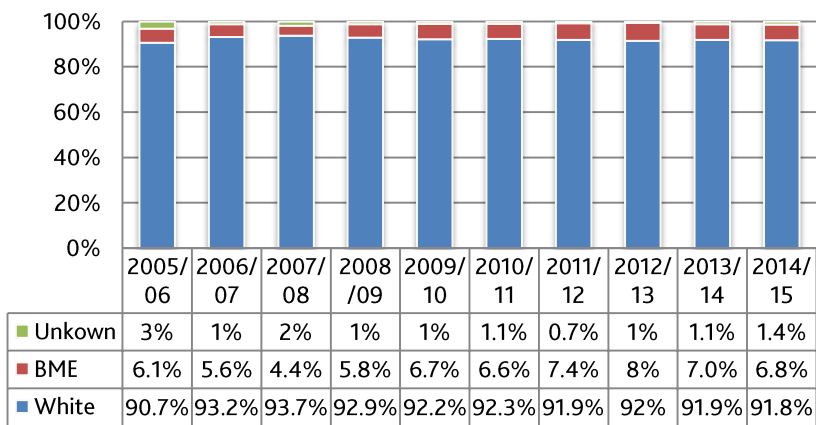
## Overview

This report focuses primarily on four of the nine protected characteristics, namely age, ethnicity, sexual identity and disability. Data relating to sexual orientation and religion and belief is also included. However, data collected regarding maternity, marital status, and gender identity is not included due to small numbers.

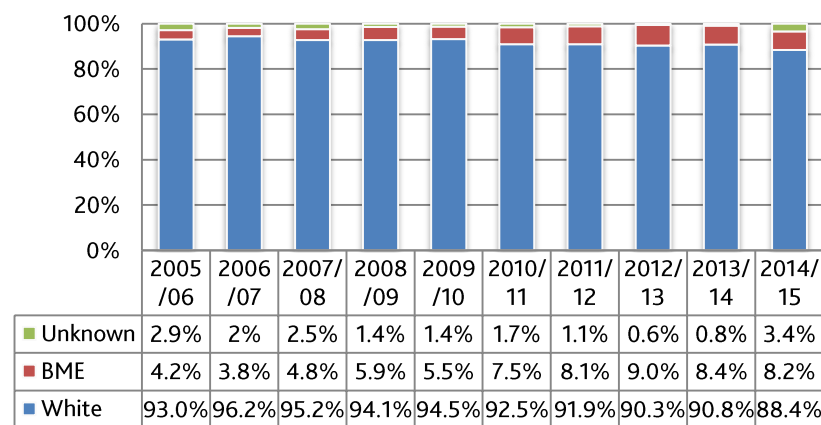
GSA has prioritised a number of equality-related concerns in its [Equality Outcomes](#), which will contribute to wider representation and diversity among the student body, both directly and indirectly. These include: support for those with hidden disabilities and mental health issues; a culture that allows for free expression of sexual identity and religious belief; an increasingly diverse curriculum; and a commitment to increasing the number of UK-domiciled students from BAME groups.

1. Ethnicity

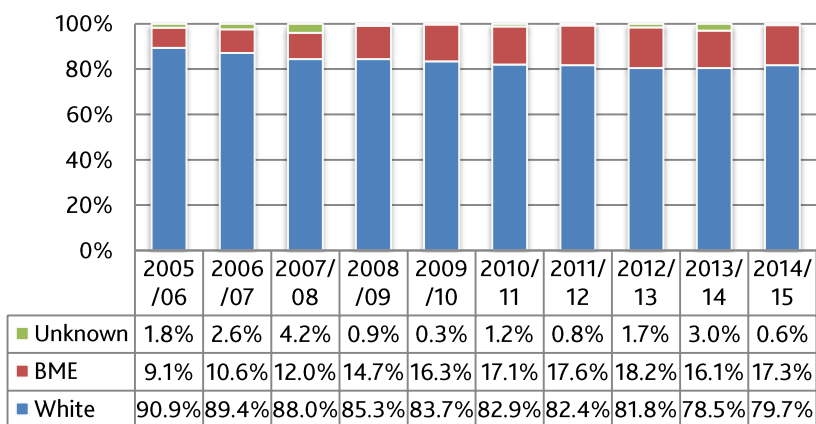
UCAS Applications



UCAS Acceptances



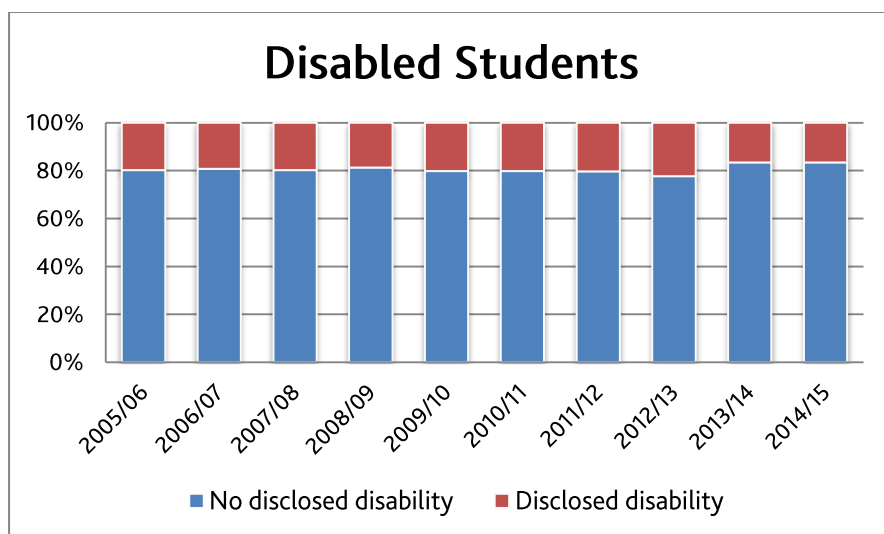
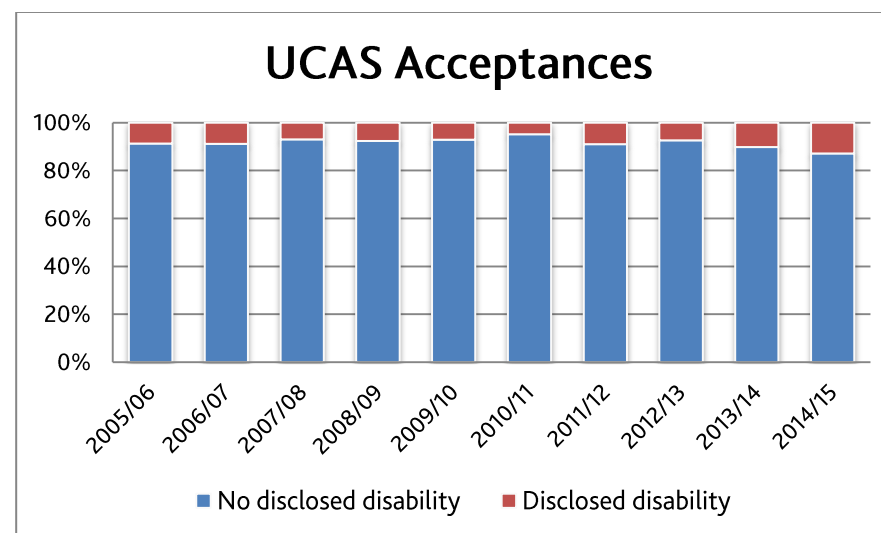
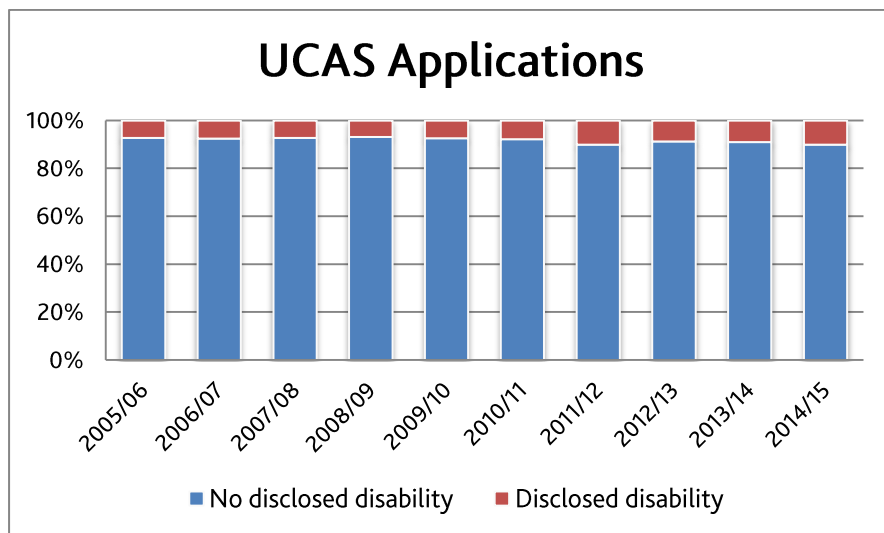
All Current Students (excl. SIT)



Observations:

- The percentage of applications from BAME groups since 2008/9 has remained steady at an average of c.7% of all UCAS applications
- Over the same period, acceptances of BAME students have also averaged at c.7%. The last three years show a slightly higher proportion of acceptance than application.
- However, analysis of the current student population reveals a greater ethnic diversity among the student body than that of its UCAS applicants due to wider representation among international and postgraduate students

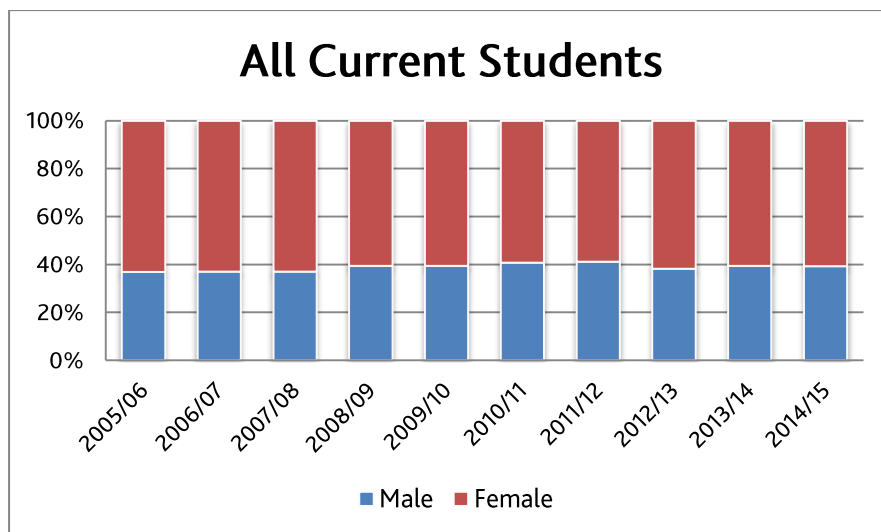
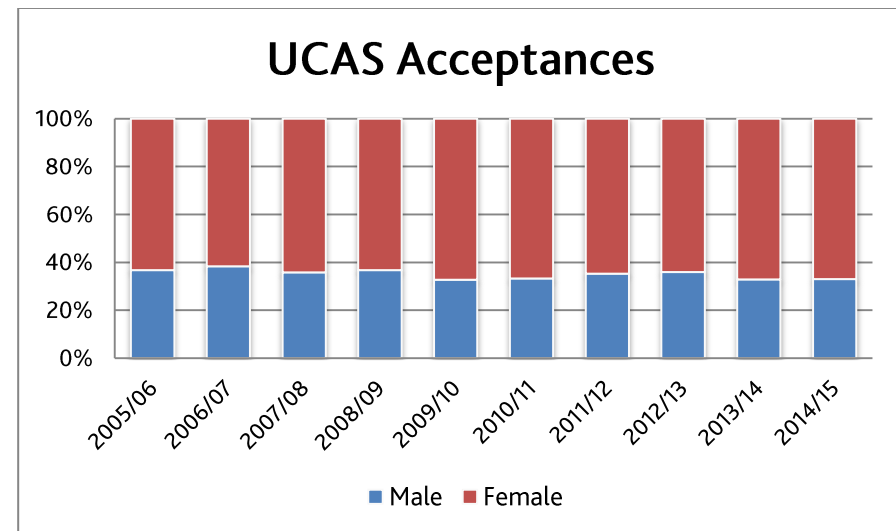
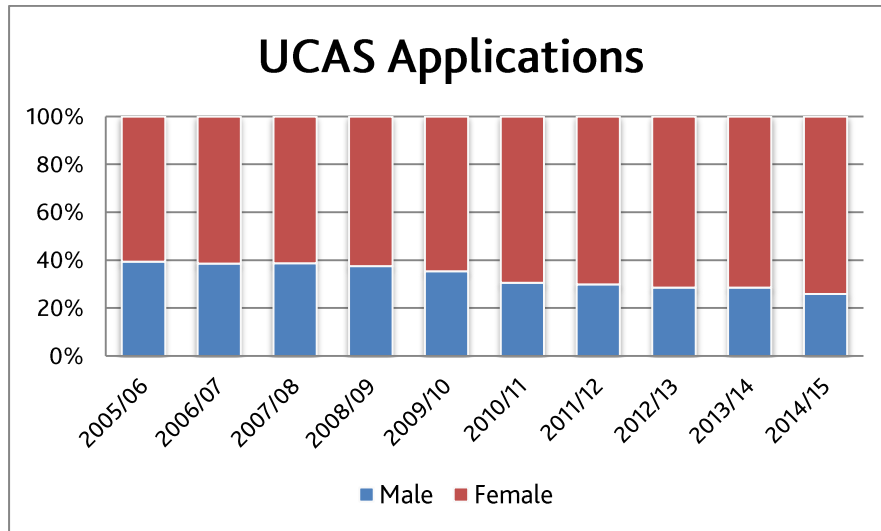
2. Disability



**Observations**

- During the 5 year period 10/11 the number of students making a UCAS application disclosing a disability have increased year on year.
- Data in respect of UCAS acceptances indicates that the percentage of these students accepted has also increased.
- In the student body as a whole the 14/15 figure of 16.6% of students disclosing has remained steady since 13/14 after a fall since 11/12. The percentage remains significantly higher than the UK and is more than double the Scottish average.
- Disclosure in the School of Fine Art is more than double that in the other schools.

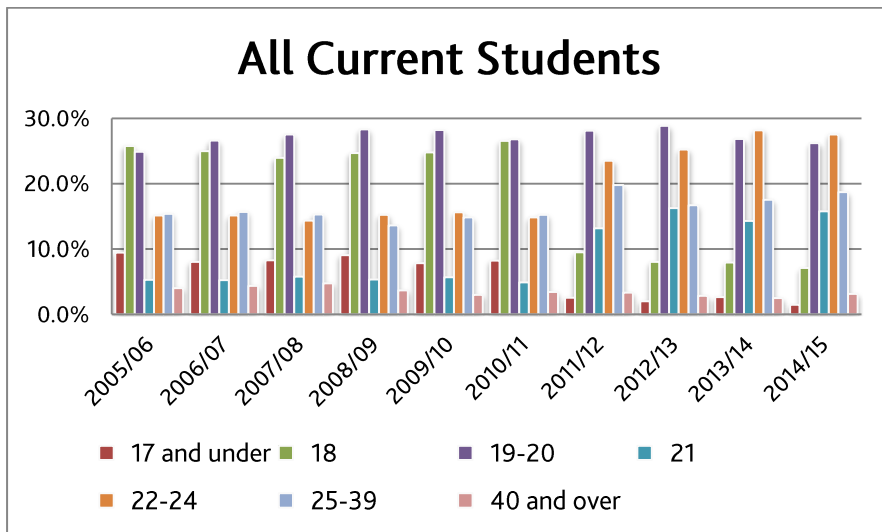
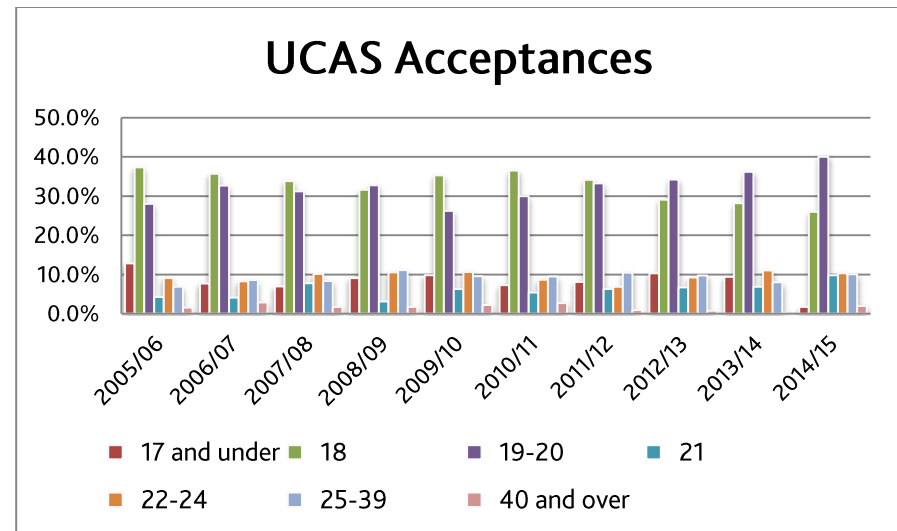
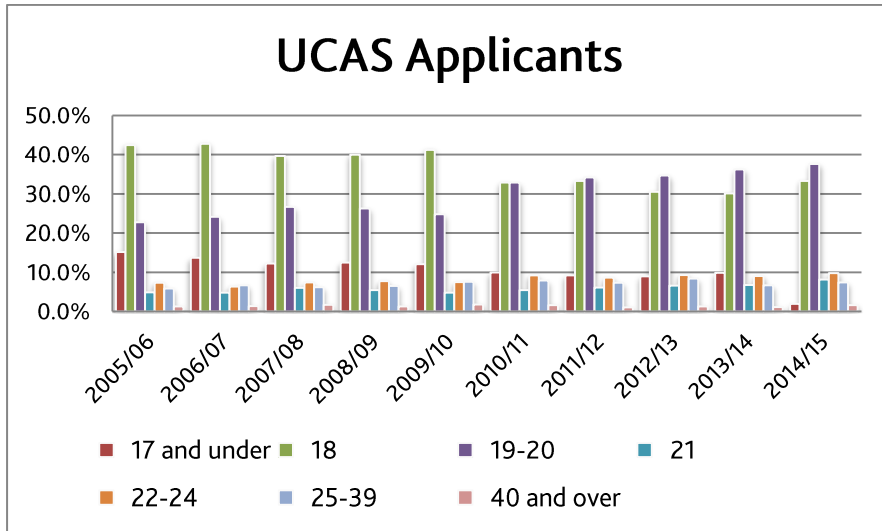
3. Sexual Identity



Observations:

- UCAS applications are predominantly from female applicants with the percentage of applications from males falling by almost 10% since 9/10.
- UCAS acceptances continue to show a slightly reduced ratio at approx. 2:1 female to male as compared to approx.. 2.5:1 in applications.
- Across the whole student body the % of female students at 60.7% remains higher than the UK and Scottish levels but lower than other specialist institutions.

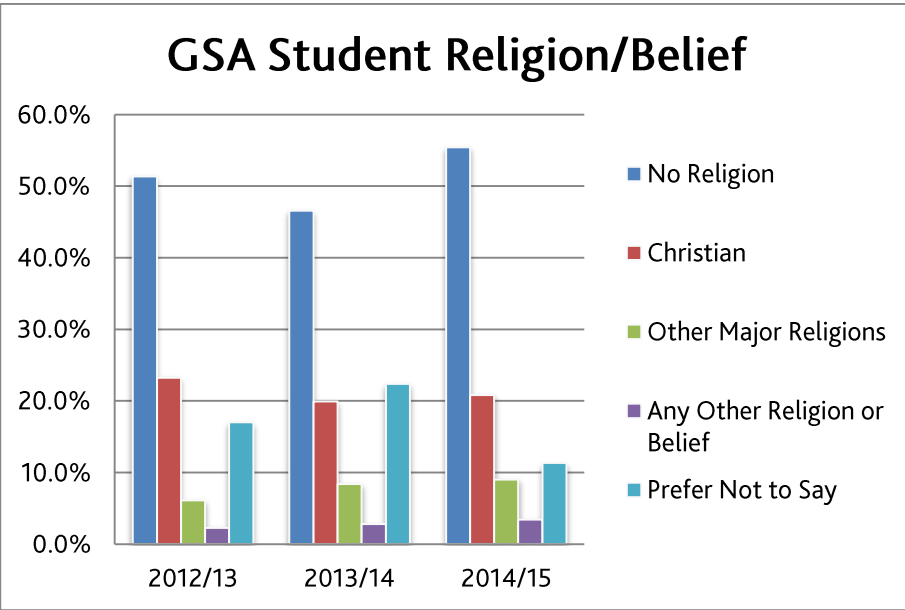
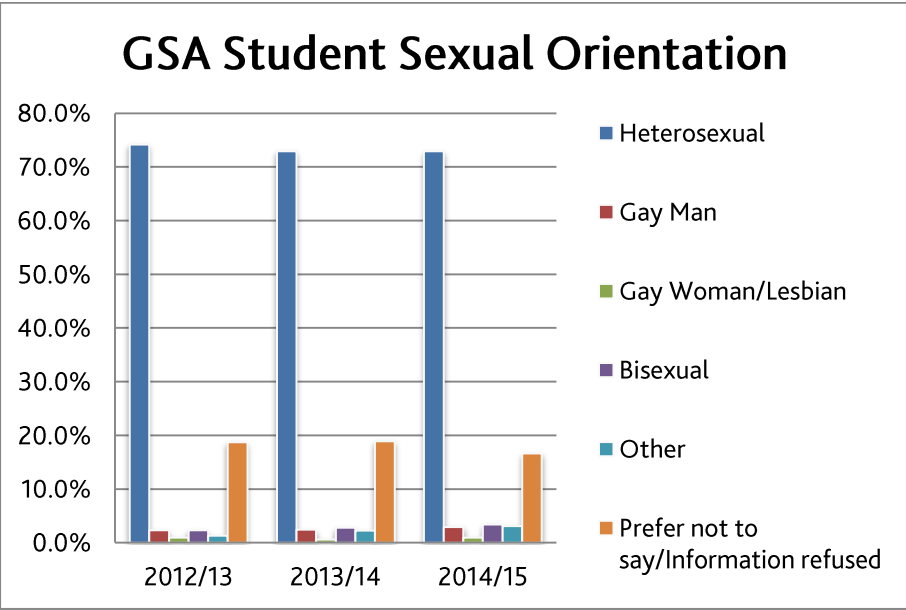
4. Age



Observations:

- The number of applicants age 17 or under has fallen from 12% in 9/10 to 2% in 14/15. The number of applicants age 18 in 14/15 returned to 11/12 levels at 33.3% an increase on the previous three years.
- Applications from the 19-20/21/22-24 age groups have all risen on last year.
- In terms of acceptances, 2014-15 has seen the 19-20 age group of applicants further consolidate the position of being the greatest in number
- There is some indication of an steady increase in the number of 25-29 year olds mature students and a potential pause in the trend of students over 40 as a falling population

5. Sexual Orientation/Religion & Belief



**Observations**

- The data provides a snapshot of student sexual orientation and religion and belief at GSA.
- The number of students preferring not to disclose sexual orientation fell by a little more than 2% this year with a significant reduction in students choosing not to disclose religion or belief from 22.4% in 13/14 to 11.3% in 14/15.

## Appendix A: Raw data

### Student Ethnicity

#### Student Ethnicity

UCAS APPLICATIONS																						
	Entry Year																					
	2004/2005		2005/2006		2006/2007		2007/2008		2008/2009		2009/2010		2010/2011		2011/2012		2012/2013		2013/2014		2014/2015	
White	2158	90.4%	2098	90.7%	2039	93.2%	1953	93.7%	1929	92.9%	1812	92.2%	2651	92.3%	2665	91.9%	2540	91.5%	2723	91.9%	2445	91.8%
Black, Asian, Chinese, Mixed Race	106	4.4%	142	6.1%	122	5.6%	91	4.4%	121	5.8%	132	6.7%	189	6.6%	214	7.4%	217	7.8%	206	7.0%	181	6.8%
Unknown	124	5.2%	74	3.2%	26	1.2%	40	1.9%	26	1.3%	21	1.1%	31	1.1%	21	0.7%	18	0.6%	34	1.1%	37	1.4%
<b>TOTAL</b>	<b>2388</b>		<b>2314</b>		<b>2187</b>		<b>2084</b>		<b>2076</b>		<b>1965</b>		<b>2871</b>		<b>2900</b>		<b>2775</b>		<b>2963</b>		<b>2663</b>	
UCAS ACCEPTANCES																						
	Entry Year																					
	2004/2005		2005/2006		2006/2007		2007/2008		2008/2009		2009/2010		2010/2011		2011/2012		2012/2013		2013/2014		2014/2015	
White	292	89.3%	291	93.0%	255	94.4%	256	92.8%	256	92.8%	273	93.2%	270	90.9%	239	90.9%	280	90.3%	217	90.8%	259	88.4%
Black, Asian, Chinese, Mixed Race	17	5.2%	13	4.2%	10	3.7%	13	4.7%	16	5.8%	16	5.5%	22	7.4%	21	8.0%	28	9.0%	20	8.4%	24	8.2%
Unknown	18	5.5%	9	2.9%	5	1.9%	7	2.5%	4	1.4%	4	1.4%	5	1.7%	3	1.1%	2	0.6%	2	0.8%	10	3.4%
<b>TOTAL</b>	<b>327</b>		<b>313</b>		<b>270</b>		<b>276</b>		<b>276</b>		<b>293</b>		<b>297</b>		<b>263</b>		<b>310</b>		<b>239</b>		<b>293</b>	
ALL STUDENTS (excluding SIT)																						
	Entry Year																					
	2004/2005		2005/2006		2006/2007		2007/2008		2008/2009		2009/2010		2010/2011		2011/2012		2012/2013		2013/2014		2014/2015	
White	1575	87.7%	1610	88.1%	1554	85.4%	1543	82.9%	1674	83.6%	1692	82.7%	1612	81.5%	1605	81.3%	1510	75.1%	1527	78.5%	1561	79.7%
Black, Asian, Chinese, Mixed Race	147	8.2%	162	8.9%	185	10.2%	211	11.3%	289	14.4%	329	16.1%	332	16.8%	342	17.3%	435	21.6%	314	16.1%	338	17.3%
Unknown	49	2.7%	32	1.8%	47	2.6%	78	4.2%	19	0.9%	7	0.3%	23	1.2%	16	0.8%	34	1.7%	58	3.0%	11	0.6%
Refused	24	1.3%	24	1.3%	33	1.8%	29	1.6%	21	1.0%	17	0.8%	11	0.6%	12	0.6%	31	1.5%	46	2.4%	48	2.5%
<b>TOTAL</b>	<b>1795</b>		<b>1828</b>		<b>1819</b>		<b>1861</b>		<b>2003</b>		<b>2045</b>		<b>1978</b>		<b>1975</b>		<b>2010</b>		<b>1945</b>		<b>1958</b>	



Student Disability

UCAS APPLICATIONS																						
	Entry Year																					
	2004/2005		2005/2006		2006/2007		2007/2008		2008/2009		2009/2010		2010/2011		2011/2012		2012/2013		2013/2014		2014/2015	
No disclosed disability	2594	93.4%	2513	92.7%	2372	92.4%	2340	92.7%	2366	93.7%	2198	92.5%	3221	92.2%	3257	89.9%	3360	91.2%	3773	90.9%	3380	89.9%
Disclosed disability	183	6.6%	198	7.3%	194	7.6%	184	7.3%	175	6.9%	177	7.5%	274	7.8%	366	10.1%	323	8.8%	376	9.1%	379	10.1%
Unknown	0	0.0%	0	0.0%	0	0.0%	0	0.0%	0	0.0%	0	0.0%	0	0.0%	0	0.0%	0	0.0%	0	0.0%	0	0.0%
<b>TOTAL</b>	<b>2777</b>		<b>2711</b>		<b>2566</b>		<b>2524</b>		<b>2541</b>		<b>2375</b>		<b>3495</b>		<b>3623</b>		<b>3683</b>		<b>4149</b>		<b>3759</b>	
UCAS ACCEPTANCES																						
	Entry Year																					
	2004/2005		2005/2006		2006/2007		2007/2008		2008/2009		2009/2010		2010/2011		2011/2012		2012/2013		2013/2014		2014/2015	
No disclosed disability	373	94.7%	342	91.2%	309	91.2%	322	93.1%	324	92.3%	340	92.9%	352	95.1%	304	91.0%	360	92.5%	325	89.8%	346	87.2%
Disclosed disability	21	5.3%	33	8.8%	30	8.8%	24	6.9%	27	7.7%	26	7.1%	18	4.9%	30	9.0%	29	7.5%	37	10.2%	51	12.8%
Unknown	0	0.0%	0	0.0%	0	0.0%	0	0.0%	0	0.0%	0	0.0%	0	0.0%	0	0.0%	0	0.0%	0	0.0%	0	0.0%
<b>TOTAL</b>	<b>394</b>		<b>375</b>		<b>339</b>		<b>346</b>		<b>351</b>		<b>366</b>		<b>370</b>		<b>334</b>		<b>389</b>		<b>362</b>		<b>397</b>	
ALL STUDENTS																						
	Entry Year																					
	2004/2005		2005/2006		2006/2007		2007/2008		2008/2009		2009/2010		2010/2011		2011/2012		2012/2013		2013/2014		2014/2015	
No disclosed disability	1454	81.0%	1464	80.1%	1463	80.4%	1488	80.0%	1620	80.9%	1628	79.6%	1564	79.1%	1574	79.7%	1561	77.7%	1801	83.4%	1828	83.4%
Disclosed disability	341	19.0%	362	19.8%	351	19.3%	367	19.7%	373	18.6%	412	20.1%	395	20.0%	401	20.3%	347	17.3%	358	16.6%	364	16.6%
Unknown	0	0.0%	2	0.1%	5	0.3%	6	0.3%	10	0.5%	5	0.2%	19	1.0%	0	0.0%	102	5.1%	0	0.0%	0	0.0%
<b>TOTAL</b>	<b>1795</b>		<b>1828</b>		<b>1819</b>		<b>1861</b>		<b>2003</b>		<b>2045</b>		<b>1978</b>		<b>1975</b>		<b>2010</b>		<b>2159</b>		<b>2192</b>	

## Student Sexual Identity

UCAS APPLICATIONS																							
		Entry Year																					
		2004/2005		2005/2006		2006/2007		2007/2008		2008/2009		2009/2010		2010/2011		2011/2012		2012/2013		2013/2014		2014/2015	
Male		1166	42.0%	1067	39.4%	991	38.6%	978	38.7%	956	37.6%	840	35.4%	1071	30.6%	1084	29.9%	1055	28.6%	1189	28.7%	975	25.9%
Female		1611	58.0%	1644	60.6%	1575	61.4%	1546	61.3%	1585	62.4%	1535	64.6%	2424	69.4%	2539	70.1%	2628	71.4%	2960	71.3%	2784	74.1%
<b>TOTAL</b>		<b>2777</b>		<b>2711</b>		<b>2566</b>		<b>2524</b>		<b>2541</b>		<b>2375</b>		<b>3495</b>		<b>3623</b>		<b>3683</b>		<b>4149</b>		<b>3759</b>	
UCAS ACCEPTANCES																							
		Entry Year																					
		2004/2005		2005/2006		2006/2007		2007/2008		2008/2009		2009/2010		2010/2011		2011/2012		2012/2013		2013/2014		2014/2015	
Male		155	39.3%	138	36.8%	130	38.3%	124	35.8%	129	36.8%	120	32.8%	123	33.2%	118	35.3%	140	36.0%	119	32.9%	131	33.0%
Female		239	60.7%	237	63.2%	209	61.7%	222	64.2%	222	63.2%	246	67.2%	247	66.8%	216	64.7%	249	64.0%	243	67.1%	266	67.0%
<b>TOTAL</b>		<b>394</b>		<b>375</b>		<b>339</b>		<b>346</b>		<b>351</b>		<b>366</b>		<b>370</b>		<b>334</b>		<b>389</b>		<b>362</b>		<b>397</b>	
ALL STUDENTS																							
		Entry Year																					
		2004/2005		2005/2006		2006/2007		2007/2008		2008/2009		2009/2010		2010/2011		2011/2012		2012/2013		2013/2014		2014/2015	
Male		646	36.0%	675	36.9%	673	37.0%	688	37.0%	790	39.4%	807	39.5%	806	40.7%	812	41.1%	769	38.3%	850	39.4%	862	39.3%
Female		1149	64.0%	1153	63.1%	1146	63.0%	1173	63.0%	1213	60.6%	1238	60.5%	1172	59.3%	1163	58.9%	1241	61.7%	1309	60.6%	1330	60.7%
<b>TOTAL</b>		<b>1795</b>		<b>1828</b>		<b>1819</b>		<b>1861</b>		<b>2003</b>		<b>2045</b>		<b>1978</b>		<b>1975</b>		<b>2010</b>		<b>2159</b>		<b>2192</b>	

## Student Age Profile

UCAS APPLICATIONS																						
	Entry Year																					
	2004/2005		2005/2006		2006/2007		2007/2008		2008/2009		2009/2010		2010/2011		2011/2012		2012/2013		2013/2014		2014/2015	
17 and under	430	15.5%	413	15.2%	352	13.7%	309	12.2%	318	12.5%	287	12.1%	350	10.0%	334	9.2%	332	9.0%	410	9.9%	74	2.0%
18	1162	41.8%	1151	42.5%	1097	42.8%	1001	39.7%	1016	40.0%	980	41.3%	1149	32.9%	1207	33.3%	1126	30.6%	1252	30.2%	1252	33.3%
19-20	649	23.4%	617	22.8%	621	24.2%	674	26.7%	669	26.3%	590	24.8%	1149	32.9%	1240	34.2%	1277	34.7%	1506	36.3%	1416	37.7%
21	124	4.5%	133	4.9%	123	4.8%	152	6.0%	140	5.5%	114	4.8%	191	5.5%	222	6.1%	245	6.7%	281	6.8%	307	8.2%
22-24	211	7.6%	201	7.4%	164	6.4%	187	7.4%	198	7.8%	179	7.5%	322	9.2%	315	8.7%	344	9.3%	376	9.1%	368	9.8%
25-39	161	5.8%	160	5.9%	172	6.7%	158	6.3%	166	6.5%	181	7.6%	276	7.9%	267	7.4%	309	8.4%	277	6.7%	281	7.5%
40 and over	40	1.4%	36	1.3%	37	1.4%	43	1.7%	34	1.3%	44	1.9%	58	1.7%	38	1.0%	50	1.4%	47	1.1%	61	1.6%
<b>TOTAL</b>	<b>2777</b>		<b>2711</b>		<b>2566</b>		<b>2524</b>		<b>2541</b>		<b>2375</b>		<b>3495</b>		<b>3623</b>		<b>3683</b>		<b>4149</b>		<b>3759</b>	
UCAS ACCEPTANCES																						
	Entry Year																					
	2004/2005		2005/2006		2006/2007		2007/2008		2008/2009		2009/2010		2010/2011		2011/2012		2012/2013		2013/2014		2014/2015	
17 and under	55	14.0%	48	12.8%	26	7.7%	24	6.9%	32	9.1%	36	9.8%	27	7.3%	27	8.1%	40	10.3%	34	9.4%	7	1.8%
18	141	35.8%	140	37.3%	121	35.7%	117	33.8%	111	31.6%	129	35.2%	135	36.5%	114	34.1%	113	29.0%	102	28.2%	103	25.9%
19-20	109	27.7%	105	28.0%	111	32.7%	108	31.2%	115	32.8%	96	26.2%	111	30.0%	111	33.2%	133	34.2%	131	36.2%	159	40.1%
21	18	4.6%	16	4.3%	14	4.1%	27	7.8%	11	3.1%	23	6.3%	20	5.4%	21	6.3%	26	6.7%	25	6.9%	39	9.8%
22-24	38	9.6%	34	9.1%	28	8.3%	35	10.1%	37	10.5%	39	10.7%	32	8.6%	23	6.9%	36	9.3%	40	11.0%	41	10.3%
25-39	27	6.9%	26	6.9%	29	8.6%	29	8.4%	39	11.1%	35	9.6%	35	9.5%	35	10.5%	38	9.8%	29	8.0%	40	10.1%
40 and over	6	1.5%	6	1.6%	10	2.9%	6	1.7%	6	1.7%	8	2.2%	10	2.7%	3	0.9%	3	0.8%	1	0.3%	8	2.0%
<b>TOTAL</b>	<b>394</b>		<b>375</b>		<b>339</b>		<b>346</b>		<b>351</b>		<b>366</b>		<b>370</b>		<b>334</b>		<b>389</b>		<b>362</b>		<b>397</b>	
ALL STUDENTS																						
	Entry Year																					
	2004/2005		2005/2006		2006/2007		2007/2008		2008/2009		2009/2010		2010/2011		2011/2012		2012/2013		2013/2014		2014/2015	
17 and under	178	9.9%	173	9.5%	146	8.0%	154	8.3%	182	9.1%	160	7.8%	163	8.2%	51	2.6%	41	2.0%	57	2.6%	32	1.5%
18	450	25.1%	471	25.8%	454	25.0%	446	24.0%	495	24.7%	507	24.8%	525	26.5%	188	9.5%	162	8.1%	172	8.0%	156	7.1%
19-20	464	25.8%	455	24.9%	483	26.6%	512	27.5%	567	28.3%	577	28.2%	530	26.8%	555	28.1%	580	28.9%	580	26.9%	575	26.2%
21	115	6.4%	97	5.3%	95	5.2%	108	5.8%	107	5.3%	116	5.7%	97	4.9%	260	13.2%	327	16.3%	309	14.3%	346	15.8%
22-24	254	14.2%	277	15.2%	275	15.1%	267	14.3%	305	15.2%	320	15.6%	294	14.9%	464	23.5%	507	25.2%	608	28.2%	604	27.6%
25-39	263	14.7%	281	15.4%	285	15.7%	285	15.3%	273	13.6%	304	14.9%	301	15.2%	391	19.8%	336	16.7%	379	17.6%	410	18.7%
40 and over	71	4.0%	74	4.0%	79	4.3%	89	4.8%	74	3.7%	61	3.0%	68	3.4%	66	3.3%	57	2.8%	54	2.5%	69	3.1%
<b>TOTAL</b>	<b>1795</b>		<b>1828</b>		<b>1819</b>		<b>1861</b>		<b>2003</b>		<b>2045</b>		<b>1978</b>		<b>1975</b>		<b>2010</b>		<b>2159</b>		<b>2192</b>	

## Student Sexual Orientation

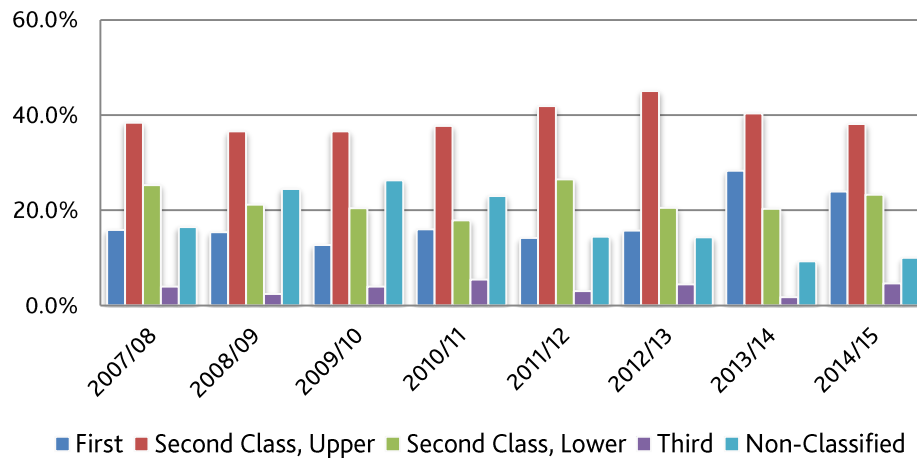
<b>GSA Sexual Orientation</b>						
<b>All Students</b>	<b>Year</b>					
	<b>2012/2013</b>		<b>2013/2014</b>		<b>2014/2015</b>	
<b>Heterosexual</b>	1382	74.2%	1575	73.0%	1642	72.9%
<b>Bisexual</b>	44	2.4%	61	2.8%	77	3.4%
<b>Gay Man</b>	44	2.4%	53	2.5%	66	2.9%
<b>Gay Woman/Lesbian</b>	18	1.0%	13	0.6%	22	1.0%
<b>Other</b>	25	1.3%	49	2.3%	70	3.1%
<b>Prefer not to say/Information refused</b>	349	18.7%	408	18.9%	375	16.7%
<b>Total</b>	1862	-	2159	-	2252	-

## Student Religion/Belief

<b>GSA Religion/Belief</b>						
<b>All Students</b>	<b>Year</b>					
	<b>2012/2013</b>		<b>2013/2014</b>		<b>2014/2015</b>	
<b>No Religion</b>	956	51.3%	1005	46.5%	1248	55.4%
<b>Christian</b>	433	23.3%	430	19.9%	469	20.8%
<b>Other Major Religions</b>	114	6.1%	181	8.4%	203	9.0%
<b>Any Other Religion or Belief</b>	42	2.3%	60	2.8%	77	3.4%
<b>Prefer not to say/Information</b>	317	17.0%	483	22.4%	255	11.3%
<b>Total</b>	1862	-	2159	-	2252	-

## Appendix B: Degree Classification Comparative Data for 2014/15

### GSA Degree Classification Profile



#### Observations:

- The number of students awarded first class degrees has reduced from 2013-14 but remains higher than in previous years.
- The attainment gap for UK domiciled students from BAME ethnic groups remains below the Scottish average but is for the first time in four years showing a gap of 5.1%.
- With regard to gender, the attainment gap remains significantly below the Scottish average.
- The attainment gap for students with a disability is positive for the first time in four years at 5.1% but continues to be below the Scottish average.

The population is small and therefore numbers can be expected to be volatile.

ALL STUDENTS	Year																	
	2006/2007		2007/2008		2008/2009		2009/2010		2010/2011		2011/2012		2012/2013		2013/2014		2014/2015	
First	44	17.3%	52	15.9%	51	15.4%	48	12.7%	50	16.0%	47	14.2%	46	15.7%	113	28.3%	103	24.0%
Second Class, Upper	100	39.2%	126	38.4%	121	36.6%	138	36.6%	118	37.7%	139	41.9%	132	45.1%	161	40.4%	164	38.1%
Second Class, Lower	80	31.4%	83	25.3%	70	21.1%	77	20.4%	56	17.9%	88	26.5%	60	20.5%	81	20.3%	100	23.3%
Third	6	2.4%	13	4.0%	8	2.4%	15	4.0%	17	5.4%	10	3.0%	13	4.4%	7	1.8%	20	4.7%
Non-Classified	25	9.8%	54	16.5%	81	24.5%	99	26.3%	72	23.0%	48	14.5%	42	14.3%	37	9.3%	43	10.0%
<b>TOTAL</b>	255		328		331		377		313		332		293		399		430	

## Degree Attainment Gaps

The degree attainment gaps look at the percentage difference between key groups of students who achieve a first and second class upper degree.

A negative percentage indicates there is no attainment gap present and is deemed positive.

### Ethnicity (UK Domiciled)

Ethnicity compares first and second class, upper degrees awarded to UK domiciled black and minority ethnic (BME) students and to white students at an institution. The overall GSA Degree Attainment Gap for ethnicity relates to BME students and is:

2014-15 5.1%    2013-14 - 0.3%    2012-13 -8.8%    2011-12 -4.4%    (Scotland 2015 8.2%)

### Disability

Disability compares first and second class, upper degrees awarded to students who have declared a disability with students who have not declared a disability at an institution. The overall GSA Degree Attainment Gap for disability relates to students who have declared a disability and is:

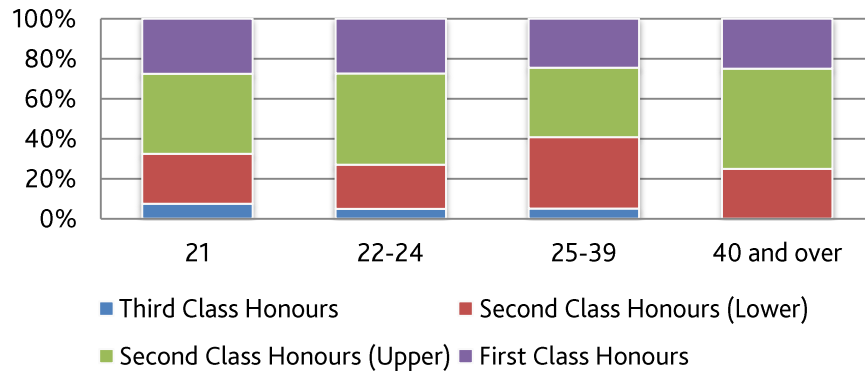
2014-15 8.9%    2013-14 - 2.6%    2012-13 1.1%    2011-12 -3.3%    (Scotland 2015 4.0%)

### Sexual Identity

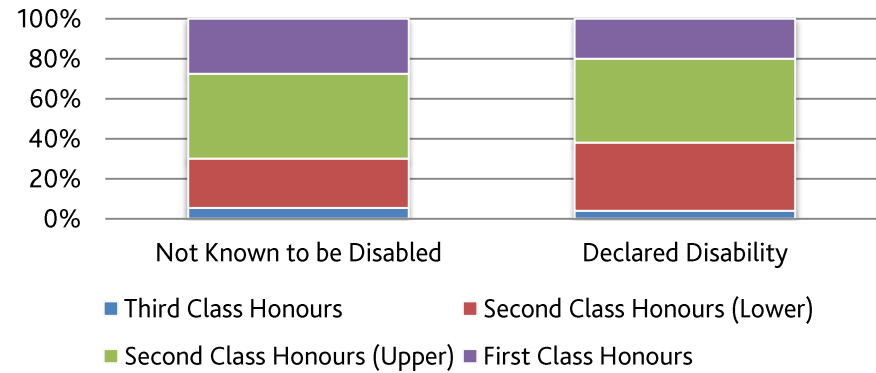
Sexual identity compares first and second class, upper degrees awarded to female students and to male students at an institution. The overall GSA Degree Attainment Gaps for sexual identity who are female and is:

2014-15 -4.2%    2013-14 - 0.4%    2012-13 4.9%    2011-12 2.5%    (Scotland 2015 5.8%)

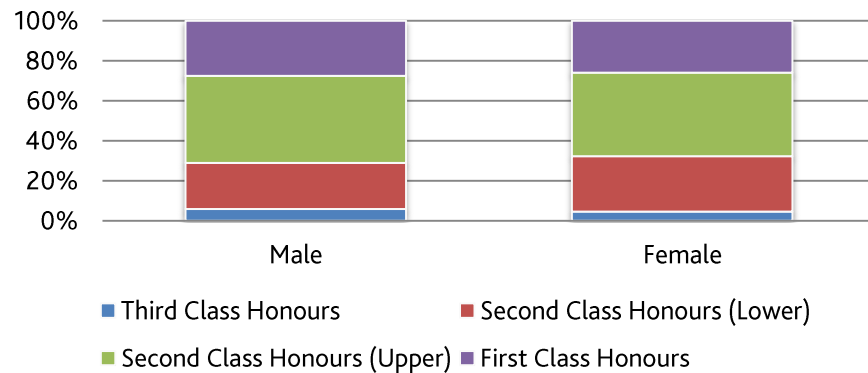
### Classification (Age at Graduation)



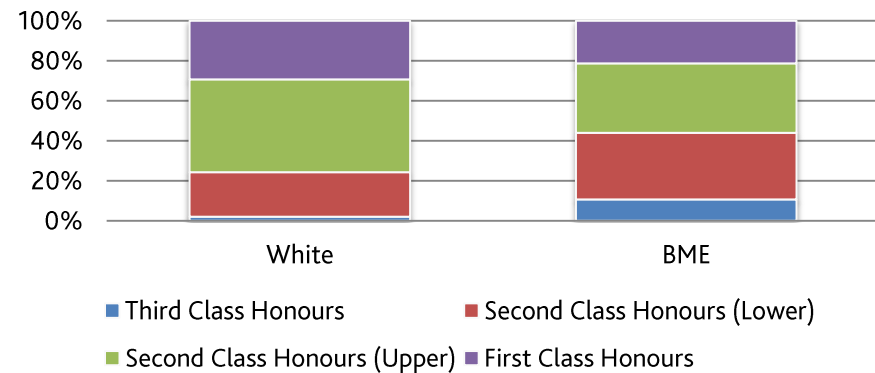
### Classification (Disability)



### Classification (Sexual Identity)



### Classification (Ethnicity)



<b>Classification (Age at Graduation)</b>						
	<b>First Class Honours</b>	<b>Second Class Honours (Upper)</b>	<b>Second Class Honours (Lower)</b>	<b>Third Class Honours</b>	<b>Total</b>	
<b>19-20</b>	0	0	0	0	0	
<b>21</b>	11	16	10	3	40	
<b>22-24</b>	67	112	54	12	245	
<b>25-39</b>	24	34	35	5	98	
<b>40 and over</b>	1	2	1	0	4	
	<b>First Class Honours</b>	<b>Second Class Honours (Upper)</b>	<b>Second Class Honours (Lower)</b>	<b>Third Class Honours</b>	<b>Total</b>	
<b>19-20</b>	-	-	-	-	-	
<b>21</b>	27.5%	40.0%	25.0%	7.5%	100.0%	
<b>22-24</b>	27.3%	45.7%	22.0%	4.9%	100.0%	
<b>25-39</b>	24.5%	34.7%	35.7%	5.1%	100.0%	
<b>40 and over</b>	25.0%	50.0%	25.0%	0.0%	100.0%	



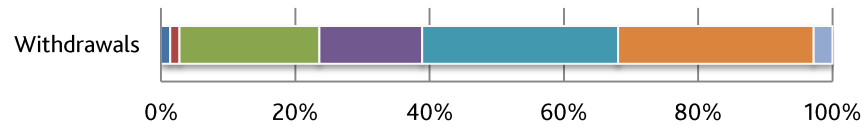
<b>Disability v Classification</b>						
	<b>First Class Honours</b>	<b>Second Class Honours (Upper)</b>	<b>Second Class Honours (Lower)</b>	<b>Third Class Honours</b>	<b>Total</b>	
<b>Not Known to be Disabled</b>	93	143	83	18	337	
<b>Declared Disability</b>	10	21	17	2	50	
	<b>First Class Honours</b>	<b>Second Class Honours (Upper)</b>	<b>Second Class Honours (Lower)</b>	<b>Third Class Honours</b>	<b>Total</b>	
<b>Not Known to be Disabled</b>	27.6%	42.4%	24.6%	5.3%	100.0%	
<b>Declared Disability</b>	20.0%	42.0%	34.0%	4.0%	100.0%	

<b>Sexual Identity v Classification</b>						
	<b>First Class Honours</b>	<b>Second Class Honours (Upper)</b>	<b>Second Class Honours (Lower)</b>	<b>Third Class Honours</b>	<b>Total</b>	
<b>Male</b>	42	66	35	9	152	
<b>Female</b>	61	98	65	11	235	
	<b>First Class Honours</b>	<b>Second Class Honours (Upper)</b>	<b>Second Class Honours (Lower)</b>	<b>Third Class Honours</b>	<b>Total</b>	
<b>Male</b>	27.6%	43.4%	23.0%	5.9%	100.0%	
<b>Female</b>	26.0%	41.7%	27.7%	4.7%	100.0%	

<b>Ethnicity v Classification</b>						
	<b>First Class Honours</b>	<b>Second Class Honours (Upper)</b>	<b>Second Class Honours (Lower)</b>	<b>Third Class Honours</b>	<b>Total</b>	
<b>White</b>	70	111	53	5	239	
<b>BME</b>	30	49	47	15	141	
	<b>First Class Honours</b>	<b>Second Class Honours (Upper)</b>	<b>Second Class Honours (Lower)</b>	<b>Third Class Honours</b>	<b>Total</b>	
<b>White</b>	29.3%	46.4%	22.2%	2.1%	100.0%	
<b>BME</b>	21.3%	34.8%	33.3%	10.6%	100.0%	

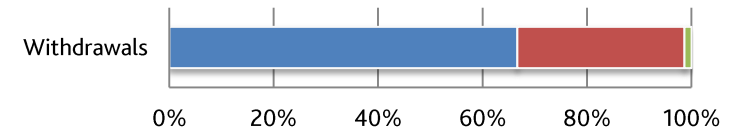
## Appendix C: Student Withdrawals

### Age



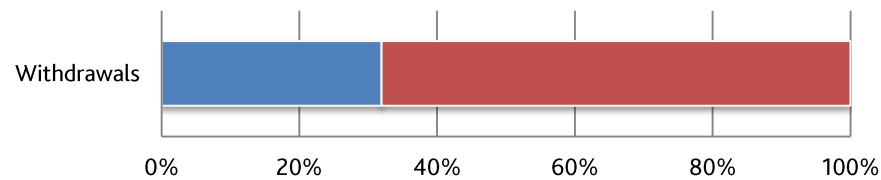
Withdrawals	
17 and under	1
18	1
19-20	15
21	11
22-24	21
25-39	21
40 and over	2

### Ethnicity



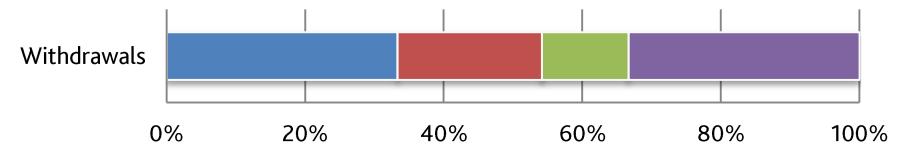
Withdrawals	
White	48
BME	23
Not Known/Info Refused	1

### Sexual Identity



Withdrawals	
Male	23
Female	49
Other	0

### Domicile



Withdrawals	
Scottish	24
RUK	15
EU	9
OS	24