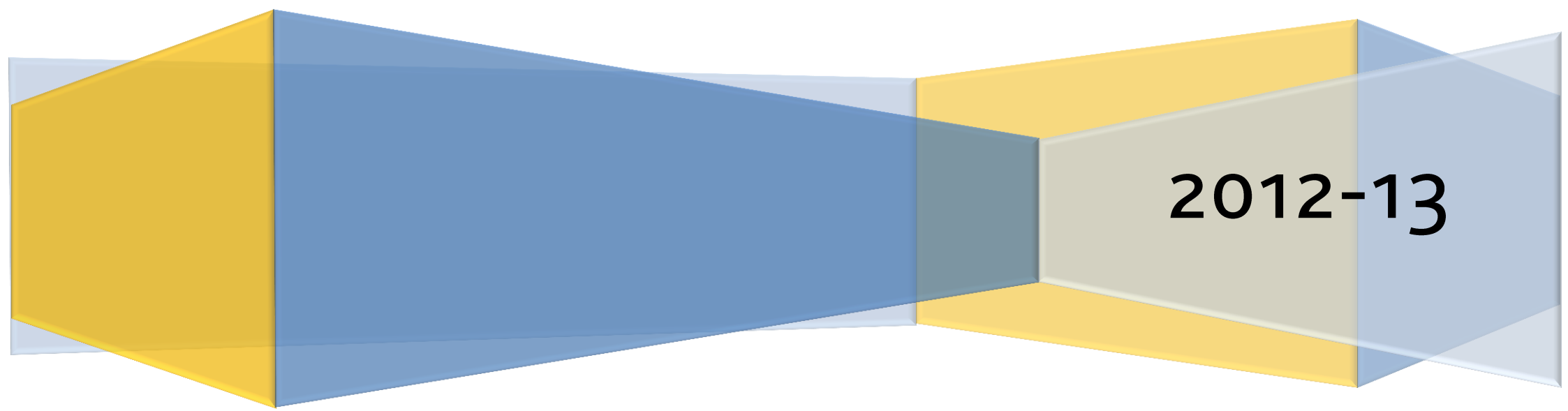


# Equality Monitoring Report: Students

The Glasgow School of Art



2012-13

## Overview

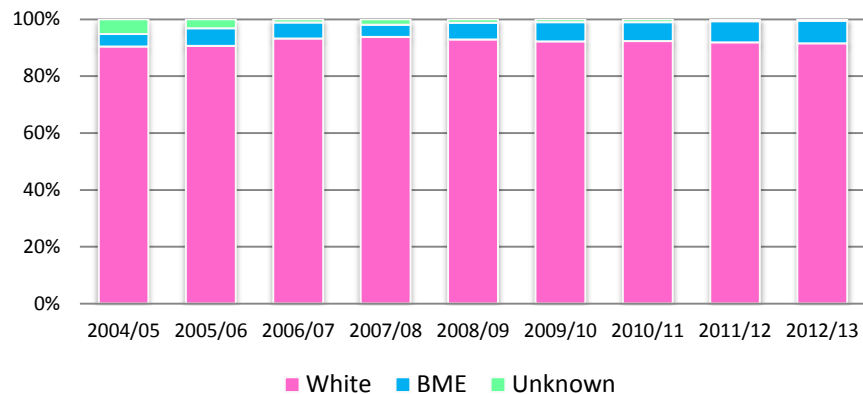
This report focuses primarily on four of the nine protected characteristics, namely age, ethnicity, gender, and disability. GSA continues to collect data on sexual orientation and religion and belief internally. Data relating to pregnancy and maternity, marital status and gender identity (i.e. the question of whether a person identifies with the gender they were assigned at birth) is not included here to ensure that individuals cannot be identified from the data.

GSA has identified [Equality Outcomes](#), which will contribute to wider representation and diversity among the student body, both directly and indirectly. These include: support for those with hidden disabilities and mental health issues; a culture that allows for free expression of sexual identity and religious belief; an increasingly diverse curriculum; and a commitment to increasing the number of UK-domiciled students from BME groups.

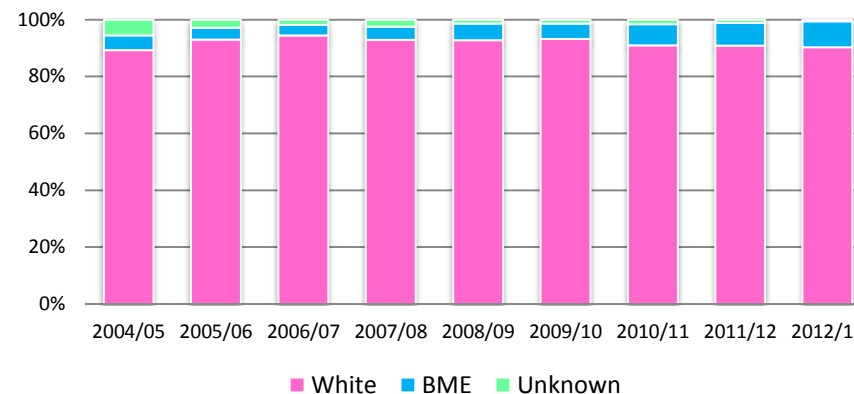
The report reveals that all protected characteristics show stable or improved rates of representation. Classification and attainment data show positive results for students from BME groups and for disabled students.

1. Ethnicity

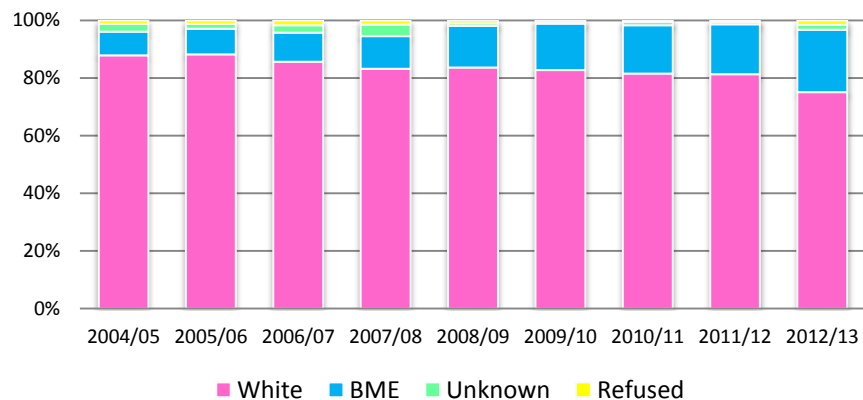
UCAS Applications



UCAS Acceptances



All Current Students

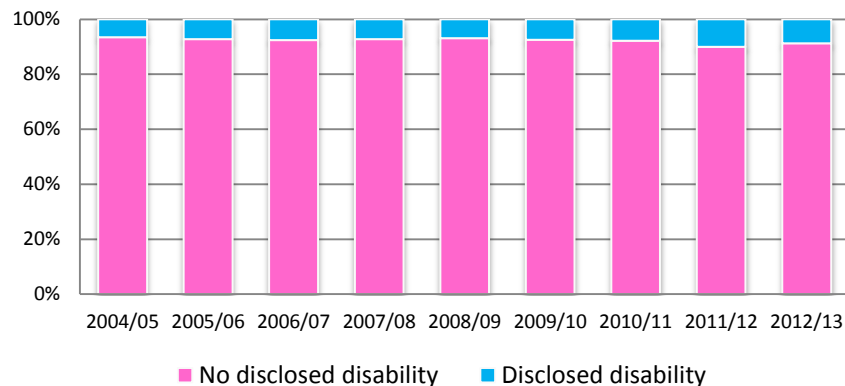


Observations:

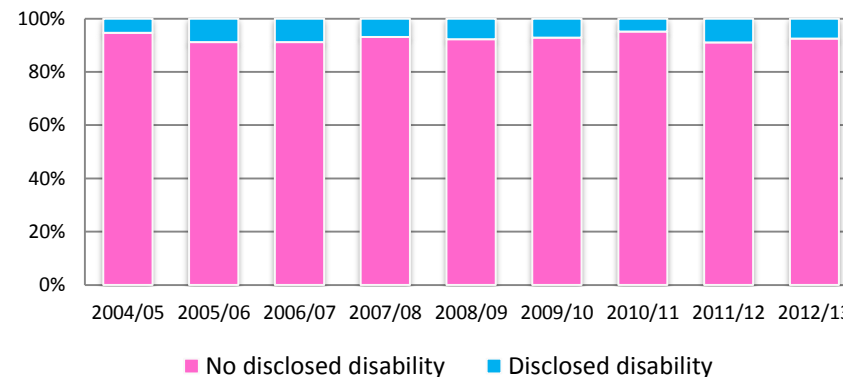
- The percentage of applications from BME groups since 2008/9 has remained steady
- Acceptance of applications from BME groups has increased since 2006/7
- The student population shows more ethnic diversity than that of UCAS applicants, due to wider representation among international students and a proportionately higher acceptance of applicants from BME groups over the last three years..

2. Disability

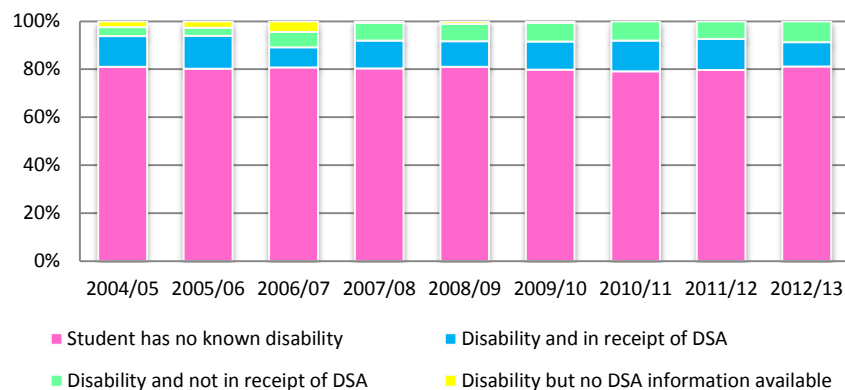
### UCAS Applications



### UCAS Acceptances



### Disabled Students

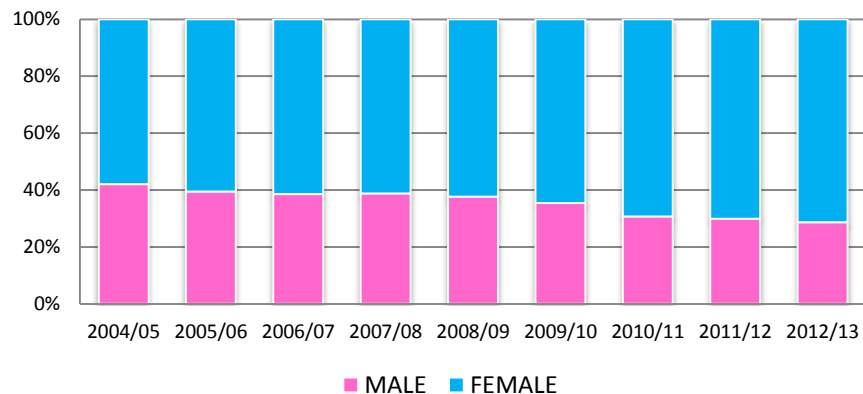


Observations:

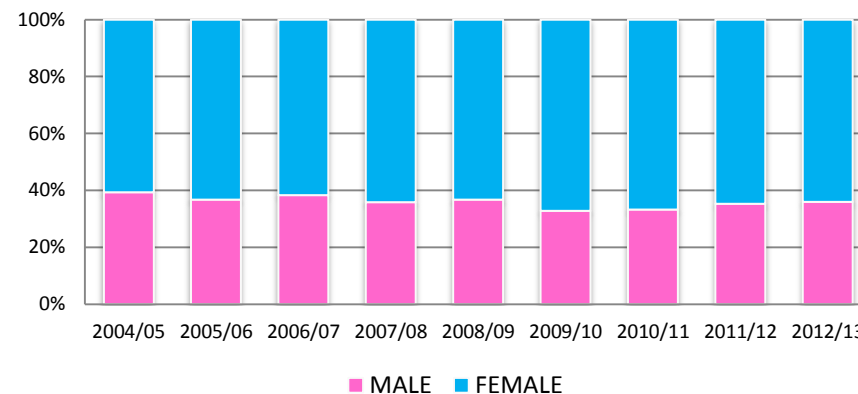
- UCAS applications to GSA have seen a gradual increase in applicants disclosing disability, the most recent figure standing at 8.8%
- The number of acceptances of students with a disclosed disability has varied minimally year on year, with this year's being only slightly down on last year's largest of 9%
- The student body as a whole has a higher representation of those with disclosed disabilities with disclosure on course remaining common.
- Disability data was not collected for Singapore cohort in 2012/13 which resulted in an increased percentage of 'Unknown'

3. Gender

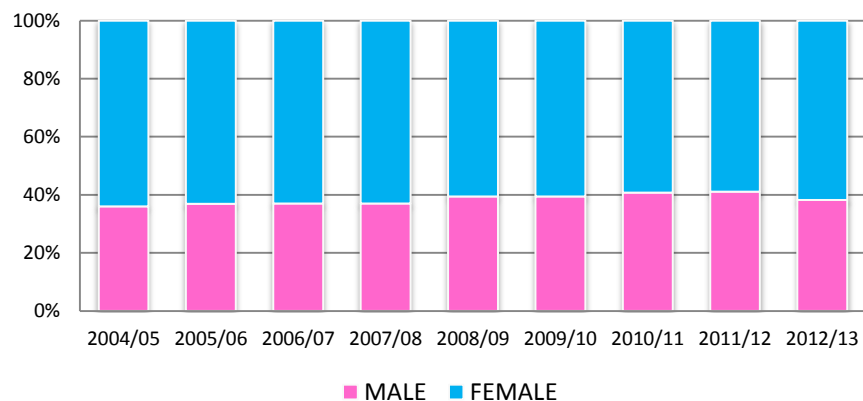
UCAS Applications



UCAS Acceptances



All Current Students

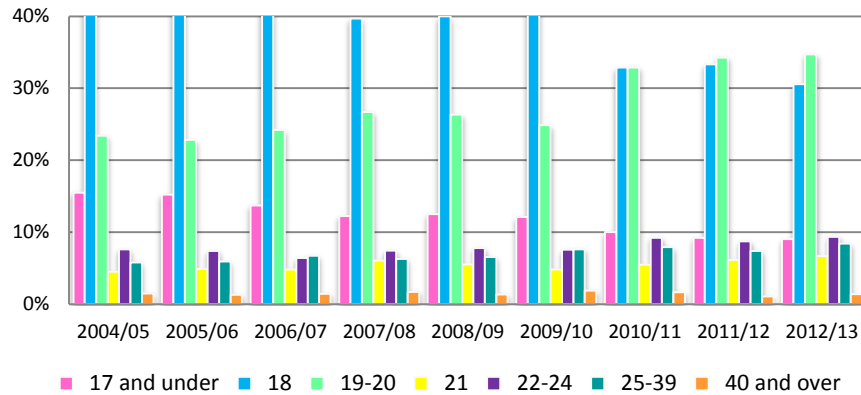


Observations:

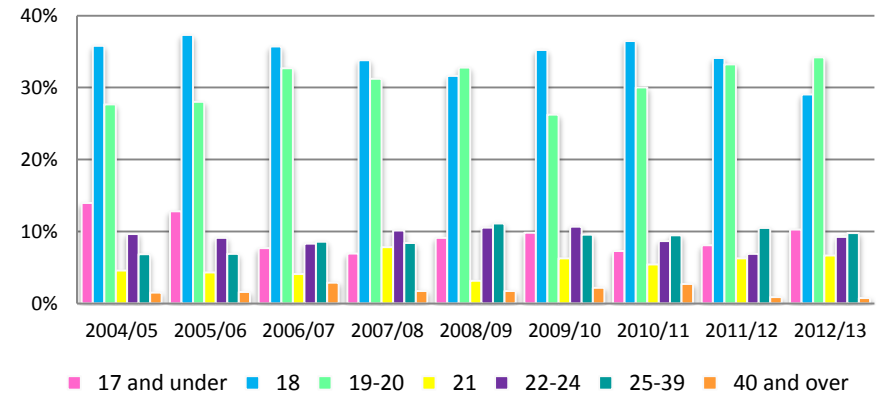
- The number of males applying through UCAS has seen a 14% drop between 2004/5 and 2012/13
- Despite this, acceptance levels have remained broadly consistent, with the most recent cohort being split 64% female to 36% male
- The student body broadly maintains a 60/40 split.

4. Age

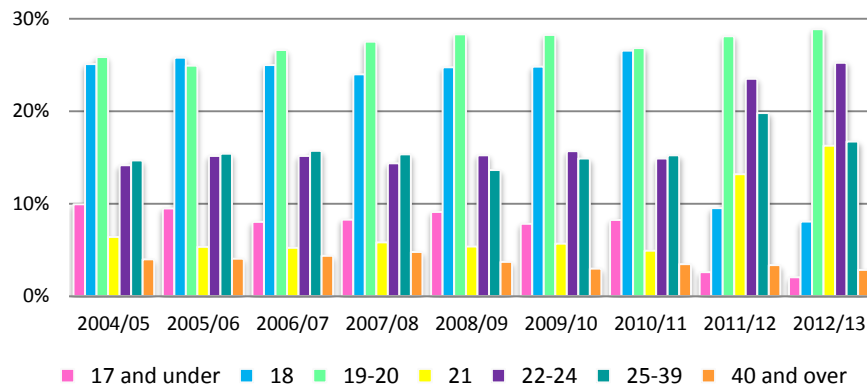
UCAS Applicants



UCAS Acceptances



All Current Students

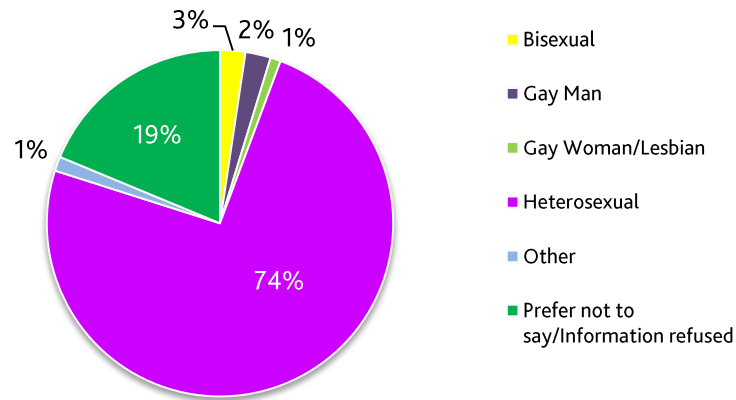


Observations:

- The number of applicants from age groups of 18 and under has gradually declined, whilst applications from those aged 19-20 have increased
- 2012/13 is the first year in which the acceptance of applicants from the 19-20 age group has exceeded that of 18 year olds (i.e. school leavers)
- There is little variation in application/acceptance in other age groups, except for a slight drop in acceptances in the over 40 age group in the last two years
- Overall student numbers show a significant rise in students aged 22-24 and reflect a growing postgraduate community

5. Sexual orientation/Religion & belief

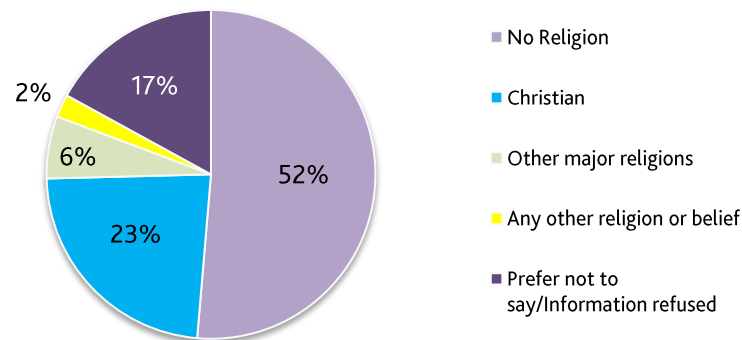
### GSA student sexual orientation



Observations:

- GSA has started to collect data on sexual orientation and religion/belief last year, therefore comparative analysis is not yet really possible
- Issues relating to disclosure may need to be explored with regard to sexual orientation where 19% of students chose not to respond (i.e. the difference between students feeling uncomfortable in disclosing their sexual orientation, and those who do not identify with the categories provided)

### GSA student religion & belief



Appendix A: Raw data

Student ethnicity

UCAS APPLICATIONS		Entry Year																	
		2004/2005		2005/2006		2006/2007		2007/2008		2008/2009		2009/2010		2010/2011		2011/2012		2012/2013	
Ethnicity	White	2158	90.4%	2098	90.7%	2039	93.2%	1953	93.7%	1929	92.9%	1812	92.2%	2651	92.3%	2665	91.9%	2540	91.5%
	Black, Asian, Chinese, Mixed Race	106	4.4%	142	6.1%	122	5.6%	91	4.4%	121	5.8%	132	6.7%	189	6.6%	214	7.4%	217	7.8%
	Unknown	124	5.2%	74	3.2%	26	1.2%	40	1.9%	26	1.3%	21	1.1%	31	1.1%	21	0.7%	18	0.6%
<b>TOTAL</b>		<b>2388</b>		<b>2314</b>		<b>2187</b>		<b>2084</b>		<b>2076</b>		<b>1965</b>		<b>2871</b>		<b>2900</b>		<b>2775</b>	

UCAS ACCEPTANCES		Entry Year																	
		2004/2005		2005/2006		2006/2007		2007/2008		2008/2009		2009/2010		2010/2011		2011/2012		2012/2013	
Ethnicity	White	292	89.3%	291	93.0%	255	94.4%	256	92.8%	256	92.8%	273	93.2%	270	90.9%	239	90.9%	280	90.3%
	Black, Asian, Chinese, Mixed Race	17	5.2%	13	4.2%	10	3.7%	13	4.7%	16	5.8%	16	5.5%	22	7.4%	21	8.0%	28	9.0%
	Unknown	18	5.5%	9	2.9%	5	1.9%	7	2.5%	4	1.4%	4	1.4%	5	1.7%	3	1.1%	2	0.6%
<b>TOTAL</b>		<b>327</b>		<b>313</b>		<b>270</b>		<b>276</b>		<b>276</b>		<b>293</b>		<b>297</b>		<b>263</b>		<b>310</b>	

ALL STUDENTS		Entry Year																	
		2004/2005		2005/2006		2006/2007		2007/2008		2008/2009		2009/2010		2010/2011		2011/2012		2012/2013	
Ethnicity	White	1575	87.7%	1610	88.1%	1554	85.4%	1543	82.9%	1674	83.6%	1692	82.7%	1612	81.5%	1605	81.3%	1510	75.1%
	Black, Asian, Chinese, Mixed Race	147	8.2%	162	8.9%	185	10.2%	211	11.3%	289	14.4%	329	16.1%	332	16.8%	342	17.3%	435	21.6%
	Unknown	49	2.7%	32	1.8%	47	2.6%	78	4.2%	19	0.9%	7	0.3%	23	1.2%	16	0.8%	34	1.7%
	Refused	24	1.3%	24	1.3%	33	1.8%	29	1.6%	21	1.0%	17	0.8%	11	0.6%	12	0.6%	31	1.5%
<b>TOTAL</b>		<b>1795</b>		<b>1828</b>		<b>1819</b>		<b>1861</b>		<b>2003</b>		<b>2045</b>		<b>1978</b>		<b>1975</b>		<b>2010</b>	



Student disability

UCAS APPLICATIONS																			
		Entry Year																	
Disability		2004/2005		2005/2006		2006/2007		2007/2008		2008/2009		2009/2010		2010/2011		2011/2012		2012/2013	
	No disclosed disability	2594	93.4%	2513	92.7%	2372	92.4%	2340	92.7%	2366	93.7%	2198	92.5%	3221	92.2%	3257	89.9%	3360	91.2%
	Disclosed disability	183	6.6%	198	7.3%	194	7.6%	184	7.3%	175	6.9%	177	7.5%	274	7.8%	366	10.1%	323	8.8%
	Unknown	0	0.0%	0	0.0%	0	0.0%	0	0.0%	0	0.0%	0	0.0%	0	0.0%	0	0.0%	0	0.0%
<b>TOTAL</b>		2777		2711		2566		2524		2541		2375		3495		3623		3683	
UCAS ACCEPTANCES																			
		Entry Year																	
Disability		2004/2005		2005/2006		2006/2007		2007/2008		2008/2009		2009/2010		2010/2011		2011/2012		2012/2013	
	No disclosed disability	373	94.7%	342	91.2%	309	91.2%	322	93.1%	324	92.3%	340	92.9%	352	95.1%	304	91.0%	360	92.5%
	Disclosed disability	21	5.3%	33	8.8%	30	8.8%	24	6.9%	27	7.7%	26	7.1%	18	4.9%	30	9.0%	29	7.5%
	Unknown	0	0.0%	0	0.0%	0	0.0%	0	0.0%	0	0.0%	0	0.0%	0	0.0%	0	0.0%	0	0.0%
<b>TOTAL</b>		394		375		339		346		351		366		370		334		389	
ALL STUDENTS																			
		Entry Year																	
Disability		2004/2005		2005/2006		2006/2007		2007/2008		2008/2009		2009/2010		2010/2011		2011/2012		2012/2013	
	No disclosed disability	1454	81.0%	1464	80.1%	1463	80.4%	1488	80.0%	1620	80.9%	1628	79.6%	1564	79.1%	1574	79.7%	1561	77.7%
	Disclosed disability	341	19.0%	362	19.8%	351	19.3%	367	19.7%	373	18.6%	412	20.1%	395	20.0%	401	20.3%	347	17.3%
	Unknown	0	0.0%	2	0.1%	5	0.3%	6	0.3%	10	0.5%	5	0.2%	19	1.0%	0	0.0%	102	5.1%
<b>TOTAL</b>		1795		1828		1819		1861		2003		2045		1978		1975		2010	

Student gender

		UCAS APPLICATIONS																		
		Entry Year																		
Gender		2004/2005		2005/2006		2006/2007		2007/2008		2008/2009		2009/2010		2010/2011		2011/2012		2012/2013		
	Male		1166	42.0%	1067	39.4%	991	38.6%	978	38.7%	956	37.6%	840	35.4%	1071	30.6%	1084	29.9%	1055	28.6%
	Female		1611	58.0%	1644	60.6%	1575	61.4%	1546	61.3%	1585	62.4%	1535	64.6%	2424	69.4%	2539	70.1%	2628	71.4%
<b>TOTAL</b>		2777		2711		2566		2524		2541		2375		3495		3623		3683		

		UCAS ACCEPTANCES																		
		Entry Year																		
Gender		2004/2005		2005/2006		2006/2007		2007/2008		2008/2009		2009/2010		2010/2011		2011/2012		2012/2013		
	Male		155	39.3%	138	36.8%	130	38.3%	124	35.8%	129	36.8%	120	32.8%	123	33.2%	118	35.3%	140	36.0%
	Female		239	60.7%	237	63.2%	209	61.7%	222	64.2%	222	63.2%	246	67.2%	247	66.8%	216	64.7%	249	64.0%
<b>TOTAL</b>		394		375		339		346		351		366		370		334		389		

		ALL STUDENTS																		
		Entry Year																		
Gender		2004/2005		2005/2006		2006/2007		2007/2008		2008/2009		2009/2010		2010/2011		2011/2012		2012/2013		
	Male		646	36.0%	675	36.9%	673	37.0%	688	37.0%	790	39.4%	807	39.5%	806	40.7%	812	41.1%	769	38.3%
	Female		1149	64.0%	1153	63.1%	1146	63.0%	1173	63.0%	1213	60.6%	1238	60.5%	1172	59.3%	1163	58.9%	1241	61.7%
<b>TOTAL</b>		1795		1828		1819		1861		2003		2045		1978		1975		2010		

Student age profile

UCAS APPLICATIONS		Entry Year																	
		2004/2005		2005/2006		2006/2007		2007/2008		2008/2009		2009/2010		2010/2011		2011/2012		2012/2013	
Age	17 and under	430	15.5%	413	15.2%	352	13.7%	309	12.2%	318	12.5%	287	12.1%	350	10.0%	334	9.2%	332	9.0%
	18	1162	41.8%	1151	42.5%	1097	42.8%	1001	39.7%	1016	40.0%	980	41.3%	1149	32.9%	1207	33.3%	1126	30.6%
	19-20	649	23.4%	617	22.8%	621	24.2%	674	26.7%	669	26.3%	590	24.8%	1149	32.9%	1240	34.2%	1277	34.7%
	21	124	4.5%	133	4.9%	123	4.8%	152	6.0%	140	5.5%	114	4.8%	191	5.5%	222	6.1%	245	6.7%
	22-24	211	7.6%	201	7.4%	164	6.4%	187	7.4%	198	7.8%	179	7.5%	322	9.2%	315	8.7%	344	9.3%
	25-39	161	5.8%	160	5.9%	172	6.7%	158	6.3%	166	6.5%	181	7.6%	276	7.9%	267	7.4%	309	8.4%
	40 and over	40	1.4%	36	1.3%	37	1.4%	43	1.7%	34	1.3%	44	1.9%	58	1.7%	38	1.0%	50	1.4%
<b>TOTAL</b>		2777		2711		2566		2524		2541		2375		3495		3623		3683	
UCAS ACCEPTANCES		Entry Year																	
		2004/2005		2005/2006		2006/2007		2007/2008		2008/2009		2009/2010		2010/2011		2011/2012		2012/2013	
Age	17 and under	55	14.0%	48	12.8%	26	7.7%	24	6.9%	32	9.1%	36	9.8%	27	7.3%	27	8.1%	40	10.3%
	18	141	35.8%	140	37.3%	121	35.7%	117	33.8%	111	31.6%	129	35.2%	135	36.5%	114	34.1%	113	29.0%
	19-20	109	27.7%	105	28.0%	111	32.7%	108	31.2%	115	32.8%	96	26.2%	111	30.0%	111	33.2%	133	34.2%
	21	18	4.6%	16	4.3%	14	4.1%	27	7.8%	11	3.1%	23	6.3%	20	5.4%	21	6.3%	26	6.7%
	22-24	38	9.6%	34	9.1%	28	8.3%	35	10.1%	37	10.5%	39	10.7%	32	8.6%	23	6.9%	36	9.3%
	25-39	27	6.9%	26	6.9%	29	8.6%	29	8.4%	39	11.1%	35	9.6%	35	9.5%	35	10.5%	38	9.8%
	40 and over	6	1.5%	6	1.6%	10	2.9%	6	1.7%	6	1.7%	8	2.2%	10	2.7%	3	0.9%	3	0.8%
<b>TOTAL</b>		394		375		339		346		351		366		370		334		389	
ALL STUDENTS		Entry Year																	
		2004/2005		2005/2006		2006/2007		2007/2008		2008/2009		2009/2010		2010/2011		2011/2012		2012/2013	
Age	17 and under	178	9.9%	173	9.5%	146	8.0%	154	8.3%	182	9.1%	160	7.8%	163	8.2%	51	2.6%	41	2.0%
	18	450	25.1%	471	25.8%	454	25.0%	446	24.0%	495	24.7%	507	24.8%	525	26.5%	188	9.5%	162	8.1%
	19-20	464	25.8%	455	24.9%	483	26.6%	512	27.5%	567	28.3%	577	28.2%	530	26.8%	555	28.1%	580	28.9%
	21	115	6.4%	97	5.3%	95	5.2%	108	5.8%	107	5.3%	116	5.7%	97	4.9%	260	13.2%	327	16.3%
	22-24	254	14.2%	277	15.2%	275	15.1%	267	14.3%	305	15.2%	320	15.6%	294	14.9%	464	23.5%	507	25.2%
	25-39	263	14.7%	281	15.4%	285	15.7%	285	15.3%	273	13.6%	304	14.9%	301	15.2%	391	19.8%	336	16.7%
	40 and over	71	4.0%	74	4.0%	79	4.3%	89	4.8%	74	3.7%	61	3.0%	68	3.4%	66	3.3%	57	2.8%
<b>TOTAL</b>		1795		1828		1819		1861		2003		2045		1978		1975		2010	

## Student sexual orientation

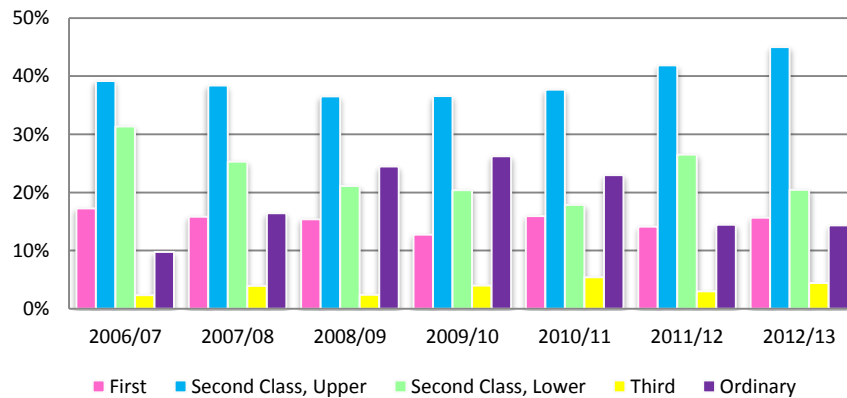
GSA Sexual Orientation	Count	%
Bisexual	44	2.4%
Gay Man	44	2.4%
Gay Woman/Lesbian	18	1.0%
Heterosexual	1382	74.2%
Other	25	1.3%
Prefer not to say/Information refused	349	18.7%
<b>Total</b>	<b>1862</b>	<b>-</b>

## Student religion/belief

GSA Religion	Count	%
No Religion	956	51.3%
Buddhist	48	2.6%
Christian - Church of Scotland	145	7.8%
Christian - Roman Catholic	190	10.2%
Christian - Presbyterian Church in Ireland	4	0.2%
Christian - Other denomination	94	5.0%
Hindu	16	0.9%
Jewish	16	0.9%
Muslim	32	1.7%
Sikh	2	0.1%
Spiritual	19	1.0%
Any other religion or belief	23	1.2%
Prefer not to say/Information refused	317	17.0%
<b>Total</b>	<b>1862</b>	<b>-</b>

## Appendix B: Degree classification comparative data for 2012/13

### GSA Degree Classification Profile



#### Observations:

- The number of those being awarded first class degrees has remained steady, whilst the number of 2:1s has risen gradually
- The data on age shows that degrees of 2:2 and below are more prevalent in the lower age groups
- The attainment of BME and disabled students at GSA is better than that of Scotland overall
- The gender attainment gap is relatively small, but larger than that of the sector in Scotland in the same period.

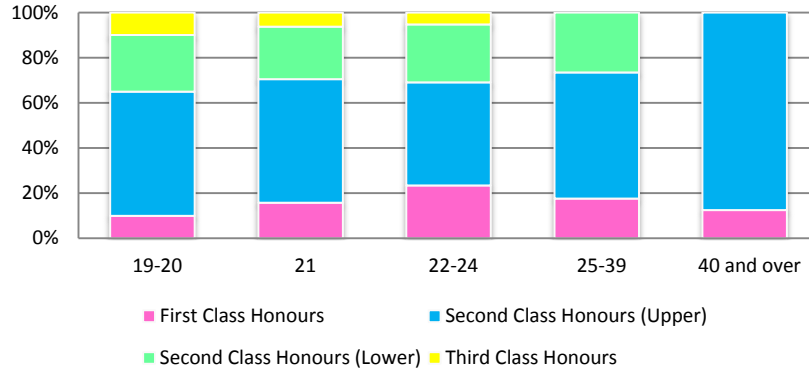
ALL STUDENTS		Entry Year															
Classification		2004/2005	2005/2006	2006/2007	2007/2008	2008/2009	2009/2010	2010/2011	2011/2012	2012/2013							
	First			44	17.3%	52	15.9%	51	15.4%	48	12.7%	50	16.0%	47	14.2%	46	15.7%
	Second Class, Upper			100	39.2%	126	38.4%	121	36.6%	138	36.6%	118	37.7%	139	41.9%	132	45.1%
	Second Class, Lower			80	31.4%	83	25.3%	70	21.1%	77	20.4%	56	17.9%	88	26.5%	60	20.5%
	Third			6	2.4%	13	4.0%	8	2.4%	15	4.0%	17	5.4%	10	3.0%	13	4.4%
	Non-Classified			25	9.8%	54	16.5%	81	24.5%	99	26.3%	72	23.0%	48	14.5%	42	14.3%
<b>TOTAL</b>				255		328		331		377		313		332		293	

Degree attainment gaps look at the percentage difference between key groups of students who achieve a first and second class upper degree. The overall GSA Degree Attainment Gaps are:

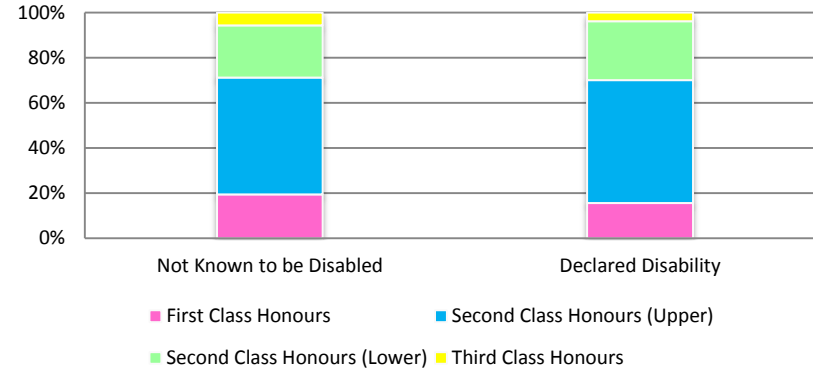
<b>Ethnicity (UK Domiciled):</b>	2012-13	-8.8%	2011-12	-4.4%	(Scotland 2013	12.7%)
<b>Disability:</b>	2012-13	1.1%	2011-12	-3.3%	(Scotland 2013	2.6%)
<b>Gender:</b>	2012-13	4.9%	2011-12	2.5%	(Scotland 2013	-5.6%)

<sup>1</sup> Scotland data taken from 'Equality in higher education: statistical report 2012', produced by the Equality Challenge Unit

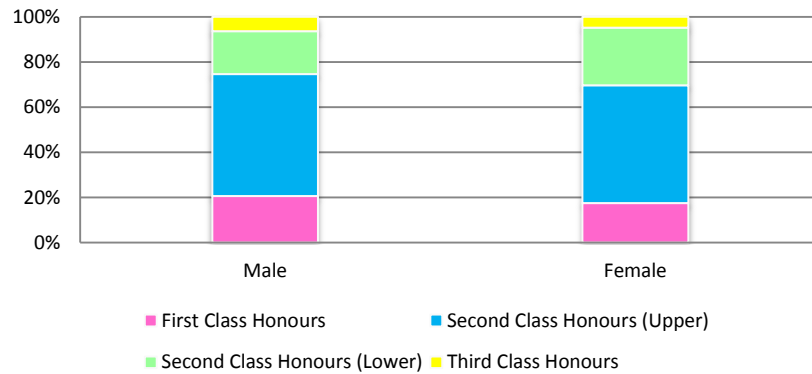
## Classification (Age at graduation)



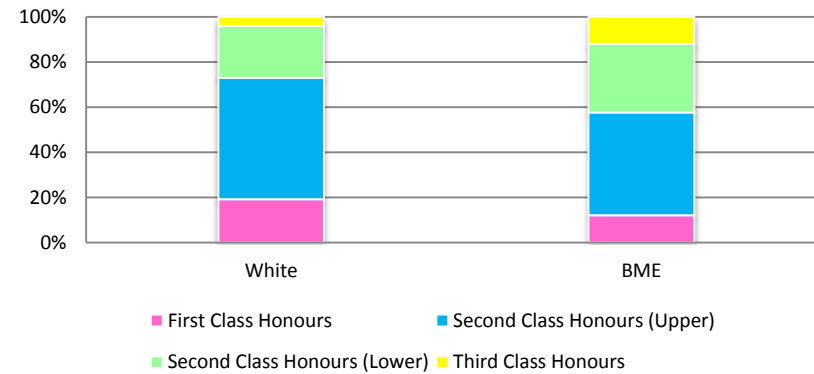
## Classification (Disability)



## Classification (Gender)



## Classification (Ethnicity)



## Appendix B: Degree classification

Classification (Age)					
	First Class Honours	Second Class Honours (Upper)	Second Class Honours (Lower)	Third Class Honours	Total
19-20	2	11	5	2	20
21	15	52	22	6	95
22-24	22	43	24	5	94
25-39	6	19	9	0	34
40 and over	1	7	0	0	8
	First Class Honours	Second Class Honours (Upper)	Second Class Honours (Lower)	Third Class Honours	Total
19-20	10.0%	55.0%	25.0%	10.0%	100.0%
21	15.8%	54.7%	23.2%	6.3%	100.0%
22-24	23.4%	45.7%	25.5%	5.3%	100.0%
25-39	17.6%	55.9%	26.5%	0.0%	100.0%
40 and over	12.5%	87.5%	0.0%	0.0%	100.0%

## Appendix B: Degree classification

Classification (Disability)					
	First Class Honours	Second Class Honours (Upper)	Second Class Honours (Lower)	Third Class Honours	Total
Not Known to be Disabled	15	22	6	1	44
Declared Disability	175	166	62	15	418
	First Class Honours	Second Class Honours (Upper)	Second Class Honours (Lower)	Third Class Honours	Total
Not Known to be Disabled	34.1%	50.0%	13.6%	2.3%	100.0%
Declared Disability	41.9%	39.7%	14.8%	3.6%	100.0%

Classification (Gender)					
	First Class Honours	Second Class Honours (Upper)	Second Class Honours (Lower)	Third Class Honours	Total
Male	13	34	12	4	63
Female	33	98	48	9	188
	First Class Honours	Second Class Honours (Upper)	Second Class Honours (Lower)	Third Class Honours	Total
Male	20.6%	54.0%	19.0%	6.3%	100.0%
Female	17.6%	52.1%	25.5%	4.8%	100.0%

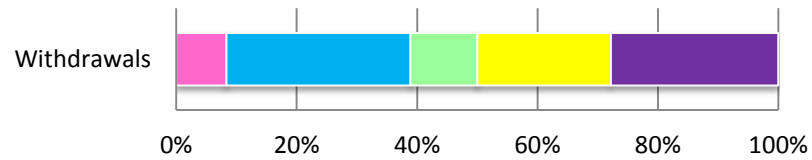


## Appendix B: Degree classification

<b>Classification (Ethnicity)</b>					
	<b>First Class Honours</b>	<b>Second Class Honours (Upper)</b>	<b>Second Class Honours (Lower)</b>	<b>Third Class Honours</b>	<b>Total</b>
<b>White</b>	42	117	50	9	218
<b>BME</b>	4	15	10	4	33
	<b>First Class Honours</b>	<b>Second Class Honours (Upper)</b>	<b>Second Class Honours (Lower)</b>	<b>Third Class Honours</b>	<b>Total</b>
<b>White</b>	19.3%	53.7%	22.9%	4.1%	100.0%
<b>BME</b>	12.1%	45.5%	30.3%	12.1%	100.0%

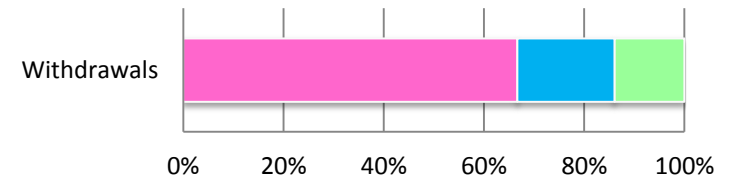
## Appendix C: Student Withdrawals

### Age



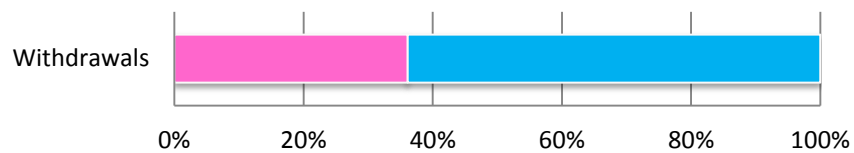
Withdrawals	
17 and under	0
18	3
19-20	11
21	4
22-24	8
25-39	10
40 and over	0

### Ethnicity



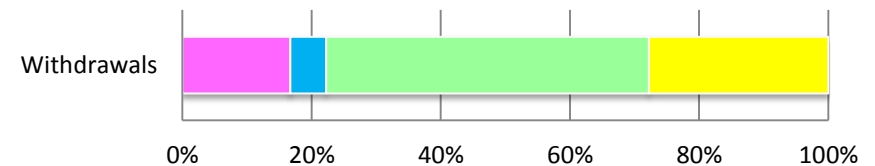
Withdrawals	
White	24
BME	7
Not Known/Information Refused	5

### Gender



Withdrawals	
Male	13
Female	23

### Domicile



Withdrawals	
Scottish	6
RUK	2
EU	18
Overseas	10