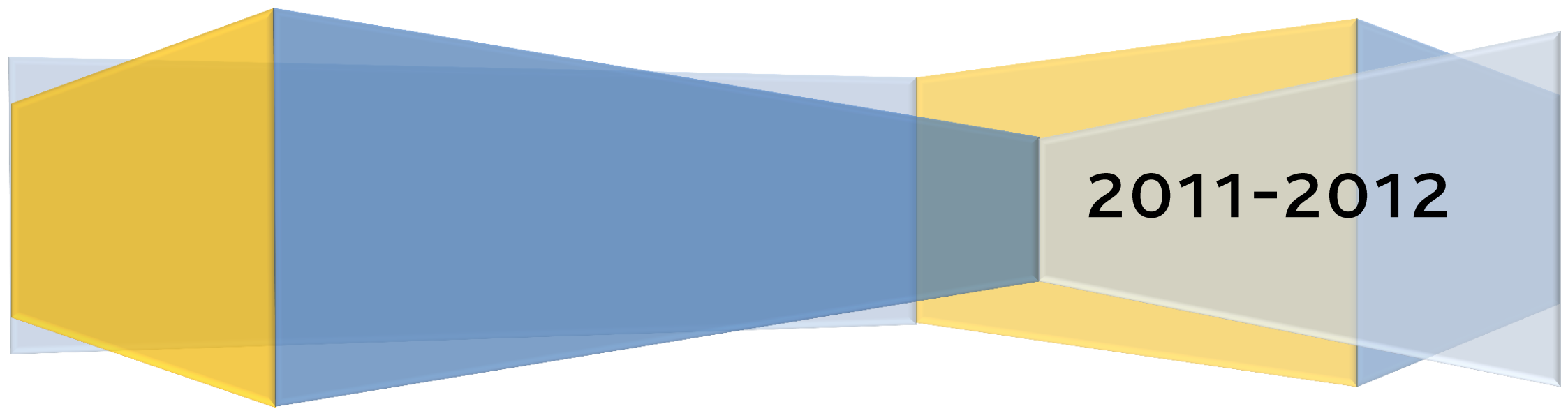


Equality monitoring report: Students

The Glasgow School of Art



2011-2012

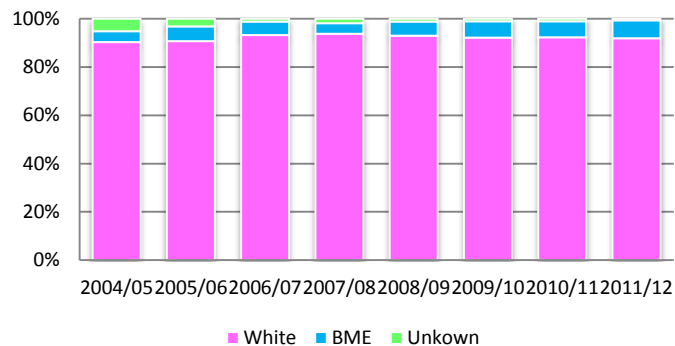
Overview

The current data evidences that GSA continues to increase the number of students from Black and Minority Ethnic (BME) groups, however the number of UK domiciled students from BME groups is relatively low. The School has identified an equality outcome to address this.

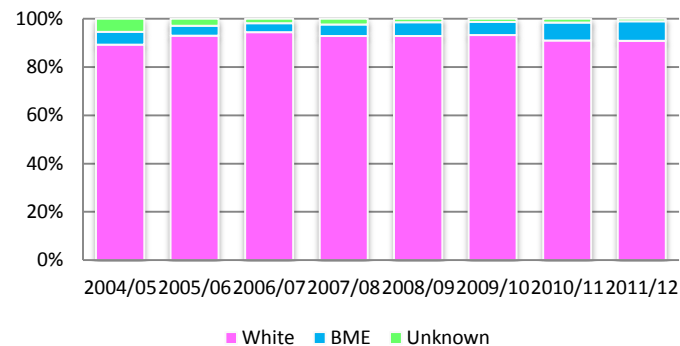
The School continues to have a relatively high proportion of disabled students. UCAS acceptances continue to be proportionate with UCAS applications across the protected characteristics: this suggests that there is no undue bias in admissions. GSA also maintains a sexual identity profile in line with the UK average. These trends align with the institutional aims of GSA. An area that may cause concern in the future is the increasing gender imbalance in UCAS applications. This is affecting all Higher Education Institutions and is not specific to GSA and its programmes.

A detailed examination of the data indicates some fluctuation. However, provided this is not sustained over time it is not a cause for concern. There are also some groups with low populations and volatility must be expected. With this in mind, there is a consistency to the results which corresponds with the expectations and demographics of GSA.

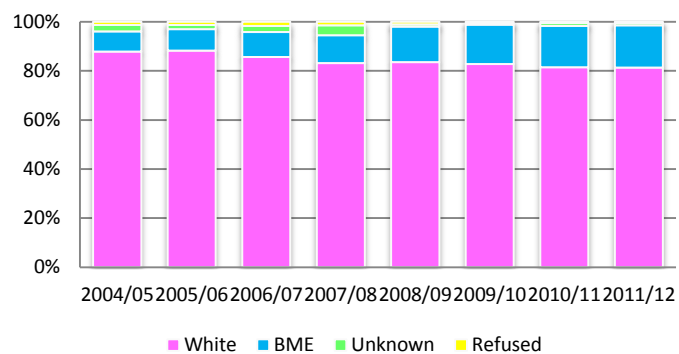
UCAS Applications - Ethnicity



UCAS Acceptances - Ethnicity



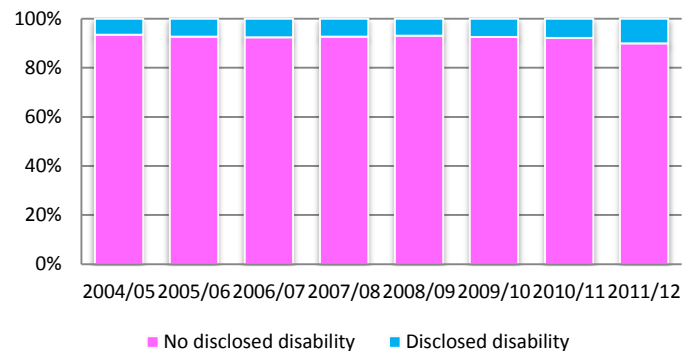
All Current Students - Ethnicity



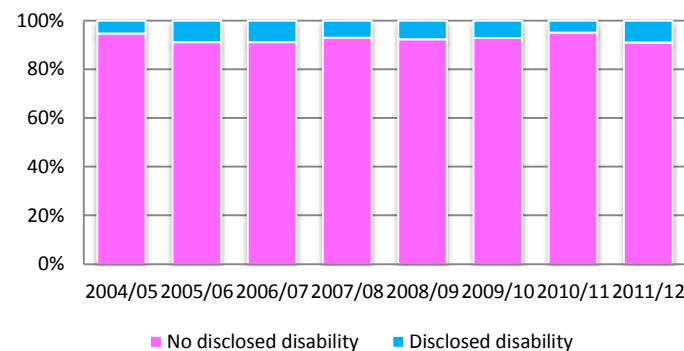
Observations:

- Numbers of BME applicants and acceptances have remained relatively similar and stable over the past five years
- Numbers of BME students in the total student body have increased steadily

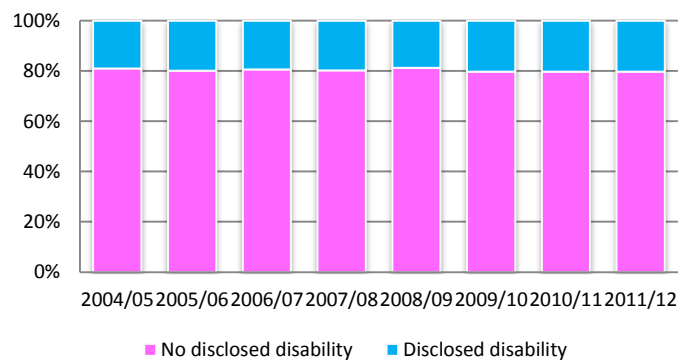
UCAS Applicants - Disability



UCAS Acceptances - Disability



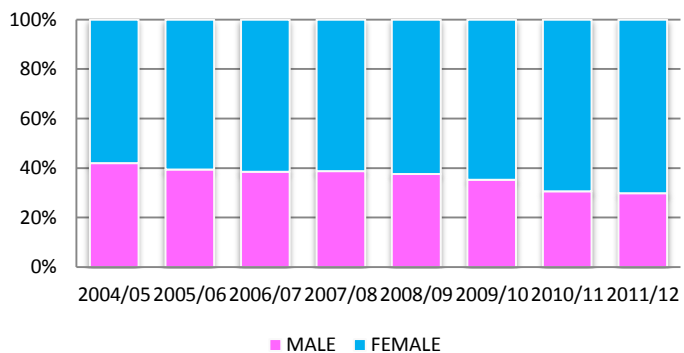
All Current Students - Disability



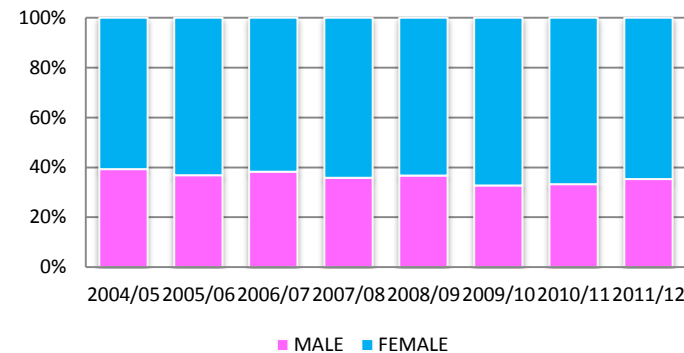
Observations:

- The numbers of applicants disclosing disability have increased steadily, with a significant increase in acceptances on last year
- Of the total student body, the number of students disclosing disability has remained consistent year on year

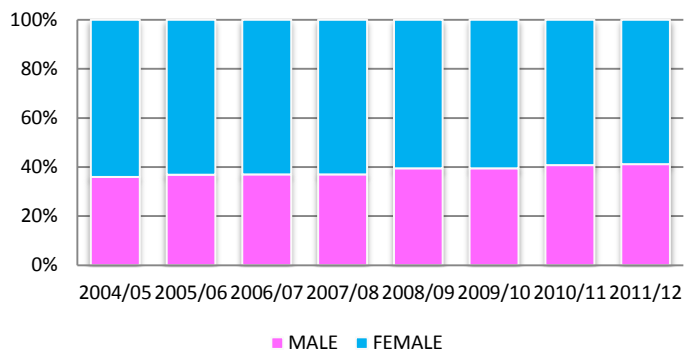
UCAS Applications - Gender



UCAS Acceptances - Gender



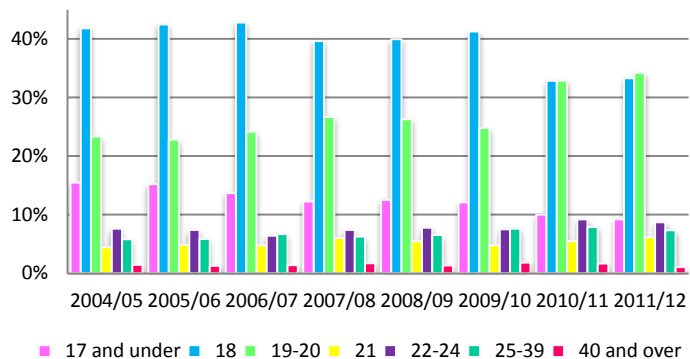
All Current Students - Gender



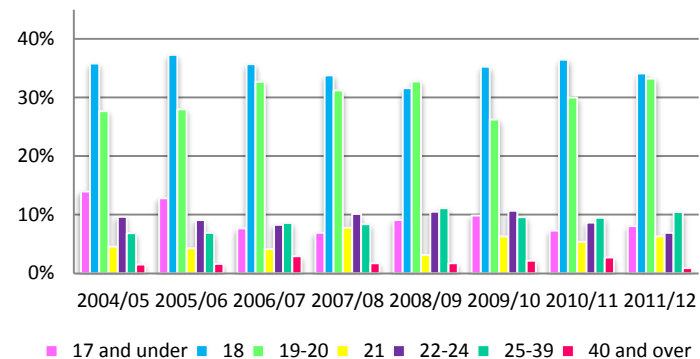
Observations:

- The number of male applicants to GSA has decreased gradually over the last four years, with a third of applicants being male this year
- The number of acceptances of both genders have in general been proportionate to applications
- The ratio of male to female in the total student body has remained in the region of 40:60

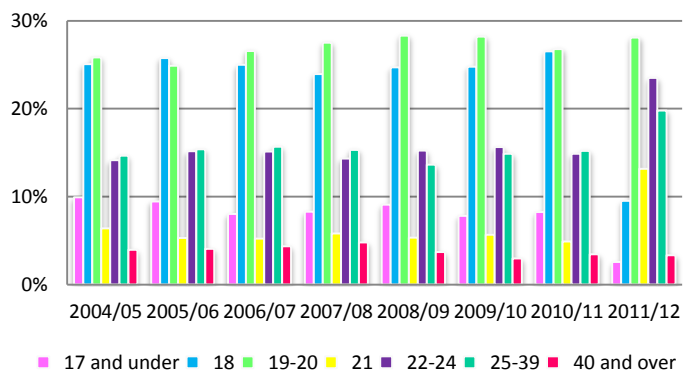
UCAS Applications - Age



UCAS Acceptances - Age



All current students - Age



Observations:

- The number of school leavers applying to GSA has fallen, suggesting that more students are seeking to gain experience prior to application
- Student acceptances are concentrated in the 18-20 age groups
- Students aged 21-39 are more widely represented in GSA as a whole, reflecting a growing graduate community

UCAS APPLICATIONS		Entry Year															
		2004/2005		2005/2006		2006/2007		2007/2008		2008/2009		2009/2010		2010/2011		2011/2012	
Ethnicity	White	2158	90.4%	2098	90.7%	2039	93.2%	1953	93.7%	1929	92.9%	1812	92.2%	2651	92.3%	2665	91.9%
	Black, Asian, Chinese, Mixed Race	106	4.4%	142	6.1%	122	5.6%	91	4.4%	121	5.8%	132	6.7%	189	6.6%	214	7.4%
	Unknown	124	5.2%	74	3.2%	26	1.2%	40	1.9%	26	1.3%	21	1.1%	31	1.1%	21	0.7%
TOTAL		2388		2314		2187		2084		2076		1965		2871		2900	
UCAS ACCEPTANCES		Entry Year															
		2004/2005		2005/2006		2006/2007		2007/2008		2008/2009		2009/2010		2010/2011		2011/2012	
Ethnicity	White	292	89.3%	291	93.0%	255	94.4%	256	92.8%	256	92.8%	273	93.2%	270	90.9%	239	90.9%
	Black, Asian, Chinese, Mixed Race	17	5.2%	13	4.2%	10	3.7%	13	4.7%	16	5.8%	16	5.5%	22	7.4%	21	8.0%
	Unknown	18	5.5%	9	2.9%	5	1.9%	7	2.5%	4	1.4%	4	1.4%	5	1.7%	3	1.1%
TOTAL		327		313		270		276		276		293		297		263	
ALL STUDENTS		Entry Year															
		2004/2005		2005/2006		2006/2007		2007/2008		2008/2009		2009/2010		2010/2011		2011/2012	
Ethnicity	White	1575	87.7%	1610	88.1%	1554	85.4%	1543	82.9%	1674	83.6%	1692	82.7%	1612	81.5%	1605	81.3%
	Black, Asian, Chinese, Mixed Race	147	8.2%	162	8.9%	185	10.2%	211	11.3%	289	14.4%	329	16.1%	332	16.8%	342	17.3%
	Unknown	49	2.7%	32	1.8%	47	2.6%	78	4.2%	19	0.9%	7	0.3%	23	1.2%	16	0.8%
	Refused	24	1.3%	24	1.3%	33	1.8%	29	1.6%	21	1.0%	17	0.8%	11	0.6%	12	0.6%
TOTAL		1795		1828		1819		1861		2003		2045		1978		1975	

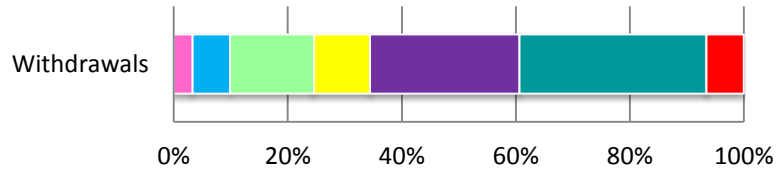
UCAS APPLICATIONS																	
		Entry Year															
Disability		2004/2005		2005/2006		2006/2007		2007/2008		2008/2009		2009/2010		2010/2011		2011/2012	
	No disclosed disability	2594	93.4%	2513	92.7%	2372	92.4%	2340	92.7%	2366	93.7%	2198	92.5%	3221	92.2%	3257	89.9%
	Disclosed disability	183	6.6%	198	7.3%	194	7.6%	184	7.3%	175	6.9%	177	7.5%	274	7.8%	366	10.1%
	Unknown	0	0.0%	0	0.0%	0	0.0%	0	0.0%	0	0.0%	0	0.0%	0	0.0%	0	0.0%
TOTAL		2777		2711		2566		2524		2541		2375		3495		3623	
UCAS ACCEPTANCES																	
		Entry Year															
Disability		2004/2005		2005/2006		2006/2007		2007/2008		2008/2009		2009/2010		2010/2011		2011/2012	
	No disclosed disability	373	94.7%	342	91.2%	309	91.2%	322	93.1%	324	92.3%	340	92.9%	352	95.1%	304	91.0%
	Disclosed disability	21	5.3%	33	8.8%	30	8.8%	24	6.9%	27	7.7%	26	7.1%	18	4.9%	30	9.0%
	Unknown	0	0.0%	0	0.0%	0	0.0%	0	0.0%	0	0.0%	0	0.0%	0	0.0%	0	0.0%
TOTAL		394		375		339		346		351		366		370		334	
ALL STUDENTS																	
		Entry Year															
Disability		2004/2005		2005/2006		2006/2007		2007/2008		2008/2009		2009/2010		2010/2011		2011/2012	
	No disclosed disability	1454	81.0%	1464	80.1%	1463	80.4%	1488	80.0%	1620	80.9%	1628	79.6%	1564	79.1%	1574	79.7%
	Disclosed disability	341	19.0%	362	19.8%	351	19.3%	367	19.7%	373	18.6%	412	20.1%	395	20.0%	401	20.3%
	Unknown	0	0.0%	2	0.1%	5	0.3%	6	0.3%	10	0.5%	5	0.2%	19	1.0%	0	0.0%
TOTAL		1795		1828		1819		1861		2003		2045		1978		1975	

UCAS APPLICATIONS																	
		Entry Year															
Gender		2004/2005		2005/2006		2006/2007		2007/2008		2008/2009		2009/2010		2010/2011		2011/2012	
	Male	1166	42.0%	1067	39.4%	991	38.6%	978	38.7%	956	37.6%	840	35.4%	1071	30.6%	1084	29.9%
	Female	1611	58.0%	1644	60.6%	1575	61.4%	1546	61.3%	1585	62.4%	1535	64.6%	2424	69.4%	2539	70.1%
TOTAL		2777		2711		2566		2524		2541		2375		3495		3623	
UCAS ACCEPTANCES																	
		Entry Year															
Gender		2004/2005		2005/2006		2006/2007		2007/2008		2008/2009		2009/2010		2010/2011		2011/2012	
	Male	155	39.3%	138	36.8%	130	38.3%	124	35.8%	129	36.8%	120	32.8%	123	33.2%	118	35.3%
	Female	239	60.7%	237	63.2%	209	61.7%	222	64.2%	222	63.2%	246	67.2%	247	66.8%	216	64.7%
TOTAL		394		375		339		346		351		366		370		334	
ALL STUDENTS																	
		Entry Year															
Gender		2004/2005		2005/2006		2006/2007		2007/2008		2008/2009		2009/2010		2010/2011		2011/2012	
	Male	646	36.0%	675	36.9%	673	37.0%	688	37.0%	790	39.4%	807	39.5%	806	40.7%	812	41.1%
	Female	1149	64.0%	1153	63.1%	1146	63.0%	1173	63.0%	1213	60.6%	1238	60.5%	1172	59.3%	1163	58.9%
TOTAL		1795		1828		1819		1861		2003		2045		1978		1975	

Appendix A: Raw Data

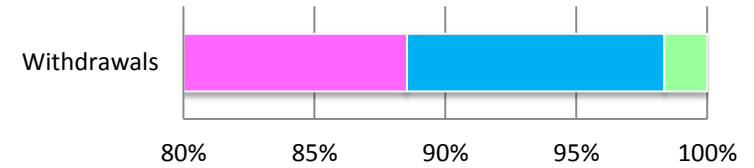
UCAS APPLICATIONS																	
		Entry Year															
		2004/2005		2005/2006		2006/2007		2007/2008		2008/2009		2009/2010		2010/2011		2011/2012	
Age	17 and under	430	15.5%	413	15.2%	352	13.7%	309	12.2%	318	12.5%	287	12.1%	350	10.0%	334	9.2%
	18	1162	41.8%	1151	42.5%	1097	42.8%	1001	39.7%	1016	40.0%	980	41.3%	1149	32.9%	1207	33.3%
	19-20	649	23.4%	617	22.8%	621	24.2%	674	26.7%	669	26.3%	590	24.8%	1149	32.9%	1240	34.2%
	21	124	4.5%	133	4.9%	123	4.8%	152	6.0%	140	5.5%	114	4.8%	191	5.5%	222	6.1%
	22-24	211	7.6%	201	7.4%	164	6.4%	187	7.4%	198	7.8%	179	7.5%	322	9.2%	315	8.7%
	25-39	161	5.8%	160	5.9%	172	6.7%	158	6.3%	166	6.5%	181	7.6%	276	7.9%	267	7.4%
	40 and over	40	1.4%	36	1.3%	37	1.4%	43	1.7%	34	1.3%	44	1.9%	58	1.7%	38	1.0%
TOTAL		2777		2711		2566		2524		2541		2375		3495		3623	
UCAS ACCEPTANCES																	
		Entry Year															
		2004/2005		2005/2006		2006/2007		2007/2008		2008/2009		2009/2010		2010/2011		2011/2012	
Age	17 and under	55	14.0%	48	12.8%	26	7.7%	24	6.9%	32	9.1%	36	9.8%	27	7.3%	27	8.1%
	18	141	35.8%	140	37.3%	121	35.7%	117	33.8%	111	31.6%	129	35.2%	135	36.5%	114	34.1%
	19-20	109	27.7%	105	28.0%	111	32.7%	108	31.2%	115	32.8%	96	26.2%	111	30.0%	111	33.2%
	21	18	4.6%	16	4.3%	14	4.1%	27	7.8%	11	3.1%	23	6.3%	20	5.4%	21	6.3%
	22-24	38	9.6%	34	9.1%	28	8.3%	35	10.1%	37	10.5%	39	10.7%	32	8.6%	23	6.9%
	25-39	27	6.9%	26	6.9%	29	8.6%	29	8.4%	39	11.1%	35	9.6%	35	9.5%	35	10.5%
	40 and over	6	1.5%	6	1.6%	10	2.9%	6	1.7%	6	1.7%	8	2.2%	10	2.7%	3	0.9%
TOTAL		394		375		339		346		351		366		370		334	
ALL STUDENTS																	
		Entry Year															
		2004/2005		2005/2006		2006/2007		2007/2008		2008/2009		2009/2010		2010/2011		2011/2012	
Age	17 and under	178	9.9%	173	9.5%	146	8.0%	154	8.3%	182	9.1%	160	7.8%	163	8.2%	51	2.6%
	18	450	25.1%	471	25.8%	454	25.0%	446	24.0%	495	24.7%	507	24.8%	525	26.5%	188	9.5%
	19-20	464	25.8%	455	24.9%	483	26.6%	512	27.5%	567	28.3%	577	28.2%	530	26.8%	555	28.1%
	21	115	6.4%	97	5.3%	95	5.2%	108	5.8%	107	5.3%	116	5.7%	97	4.9%	260	13.2%
	22-24	254	14.2%	277	15.2%	275	15.1%	267	14.3%	305	15.2%	320	15.6%	294	14.9%	464	23.5%
	25-39	263	14.7%	281	15.4%	285	15.7%	285	15.3%	273	13.6%	304	14.9%	301	15.2%	391	19.8%
	40 and over	71	4.0%	74	4.0%	79	4.3%	89	4.8%	74	3.7%	61	3.0%	68	3.4%	66	3.3%
TOTAL		1795		1828		1819		1861		2003		2045		1978		1975	

Age



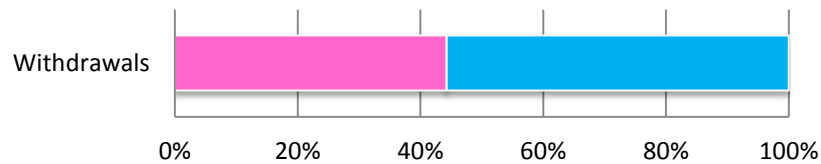
Withdrawals	
17 and under	2
18	4
19-20	9
21	6
22-24	16
25-39	20
40 and over	4

Ethnicity



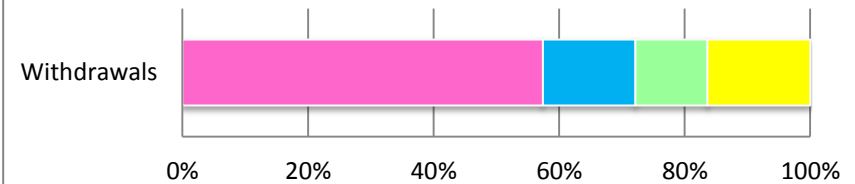
Withdrawals	
White	54
BME	6
Not Known/Information Refused	1

Gender



Withdrawals	
Male	27
Female	34

Domicile



Withdrawals	
Home	35
RUK	9
EU	7
Overseas	10