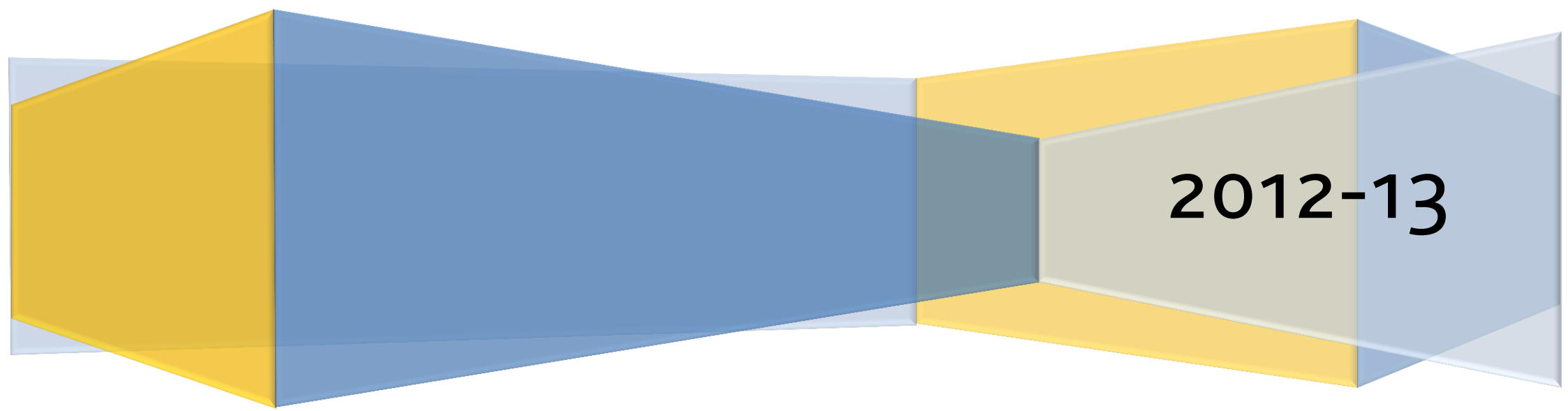


Equality Benchmark Data: Students

The Glasgow School of Art



2012-13

Overview

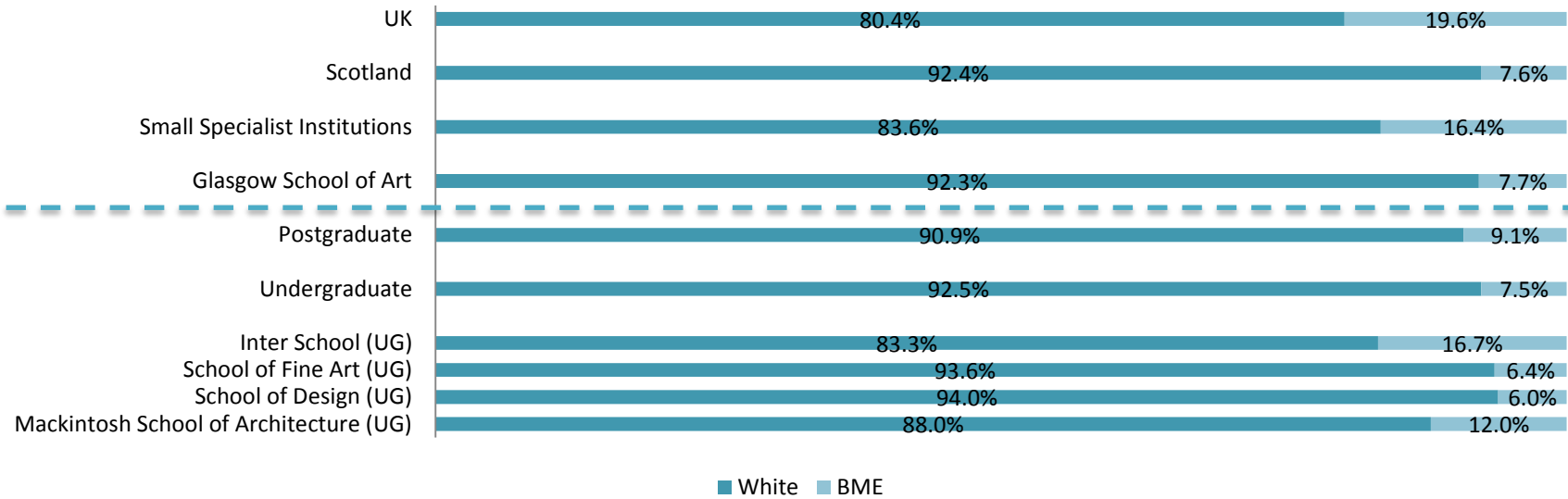
- This report provides a summary of equality and diversity statistics for GSA over the past year, as compared with the Scottish and UK averages, as well as those of other small specialist institutions.
- The report allows GSA to monitor changes and developments in the diversity of the student body, and to address areas of concern where necessary.
- The report does not contain data relating to sexual orientation, religion and belief, or gender identity (i.e. those who do or do not identify with the gender they were assigned at birth) because this data is not currently collected at national level, and therefore cannot be benchmarked.

Key points

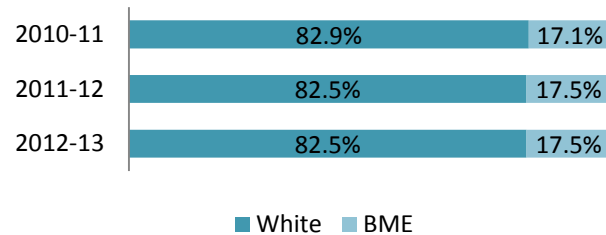
- The number of BME students across the school has remained stable, with those in the School of Architecture having increased significantly in comparison to the other schools.
- Numbers of those with a disclosed disability have risen slightly, with those in the School of Fine Art continuing to be the highest.
- There are more female than male students in both the School of Design and School of Fine Art, whilst the inverse is increasingly the case in the School of Architecture.

Benchmark data: Ethnicity

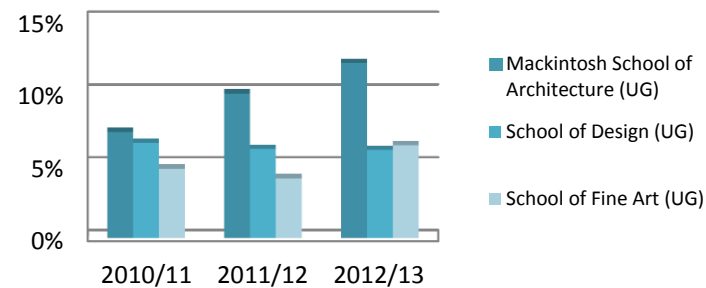
Ethnicity (UK domiciled)



Ethnicity (GSA - All students)

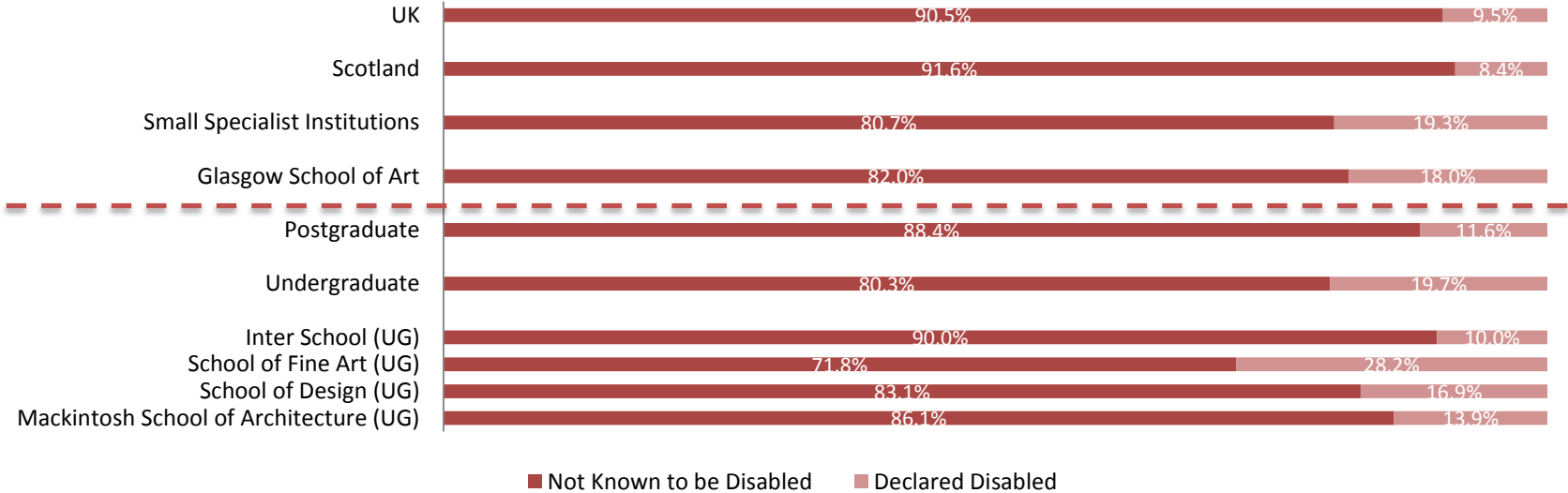


UK domiciled BME students (GSA)

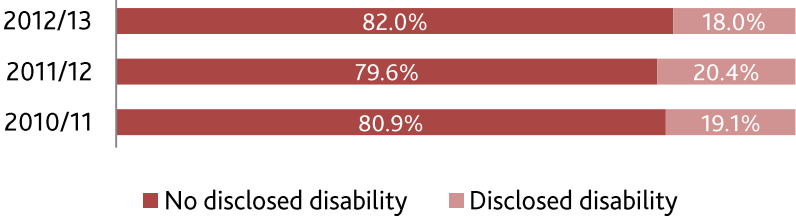


Benchmark data: Disability

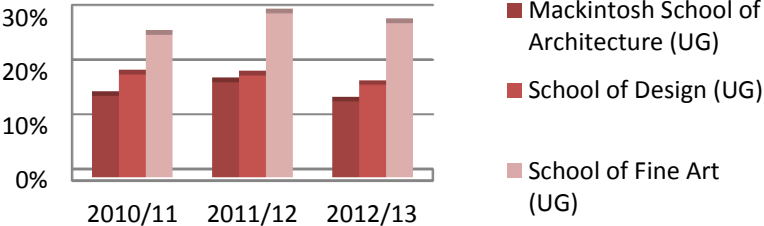
Disability (all students)



Disability (GSA - All Students)

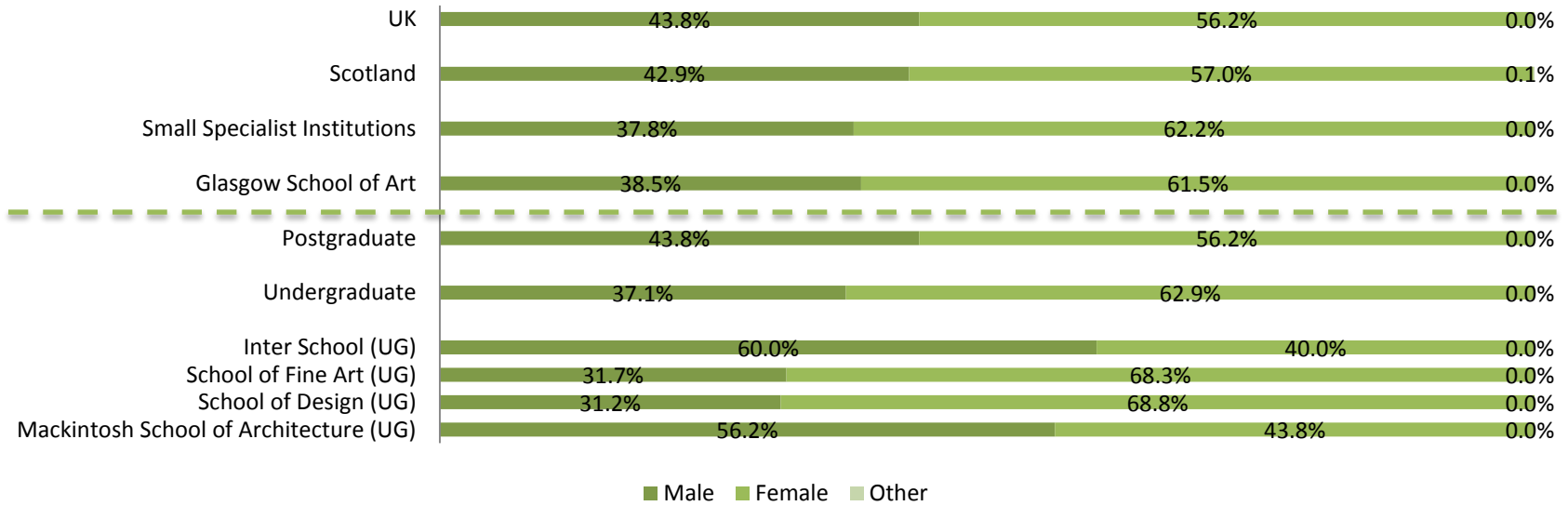


Students with a disclosed disability (GSA)

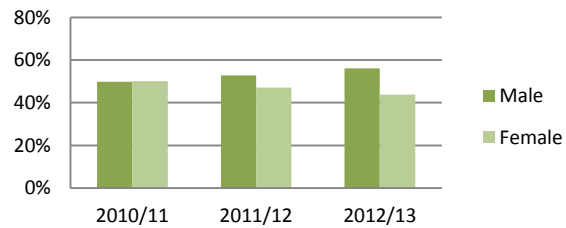


Benchmark data: Gender

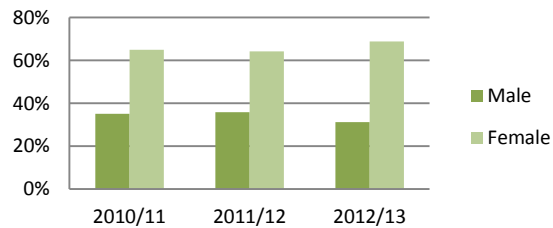
Gender (all students)



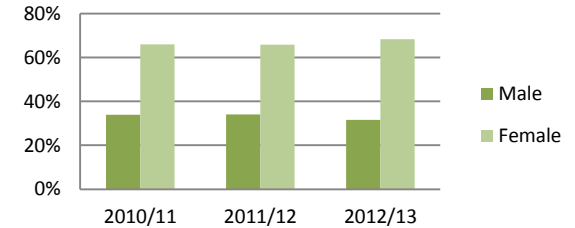
School of Architecture (UG)



School of Design (UG)

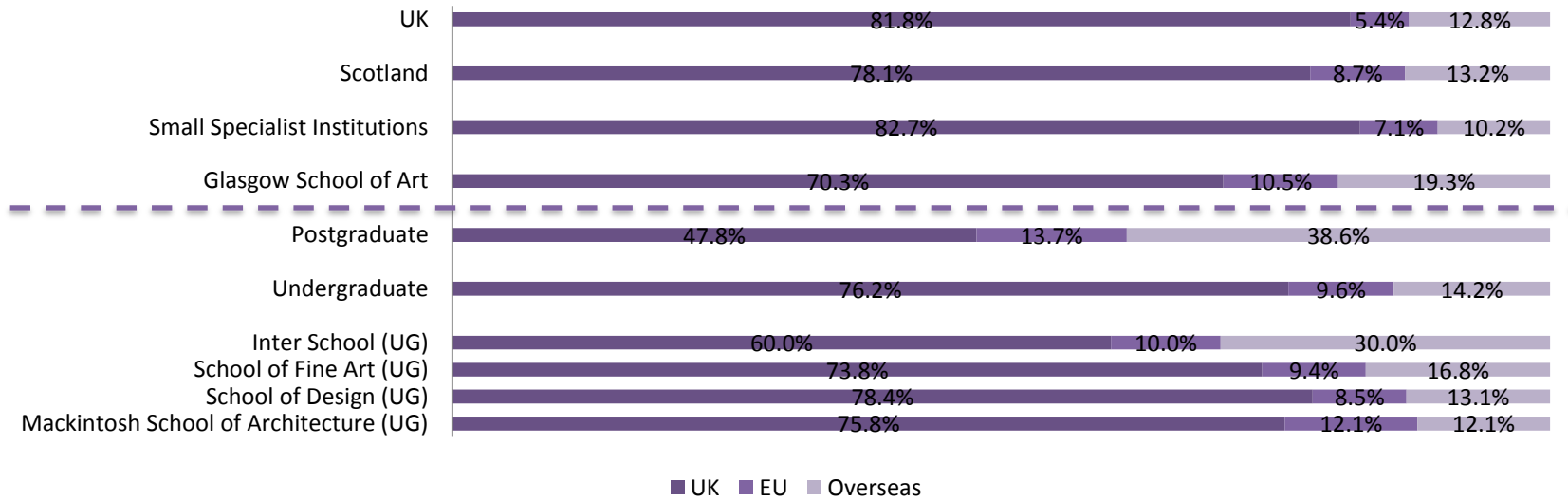


School of Fine Art (UG)

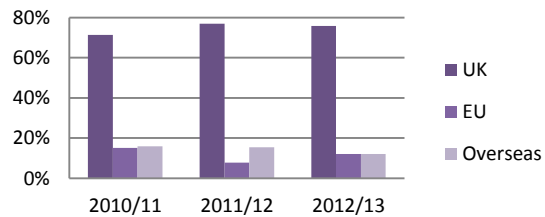


Benchmark data: Student domicile

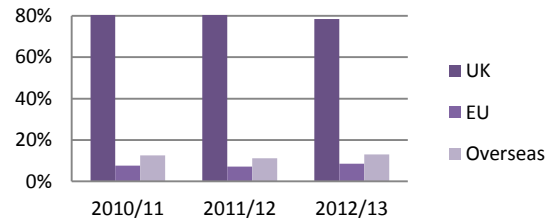
Student domicile



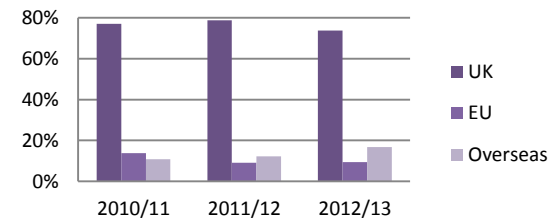
School of Architecture (UG)



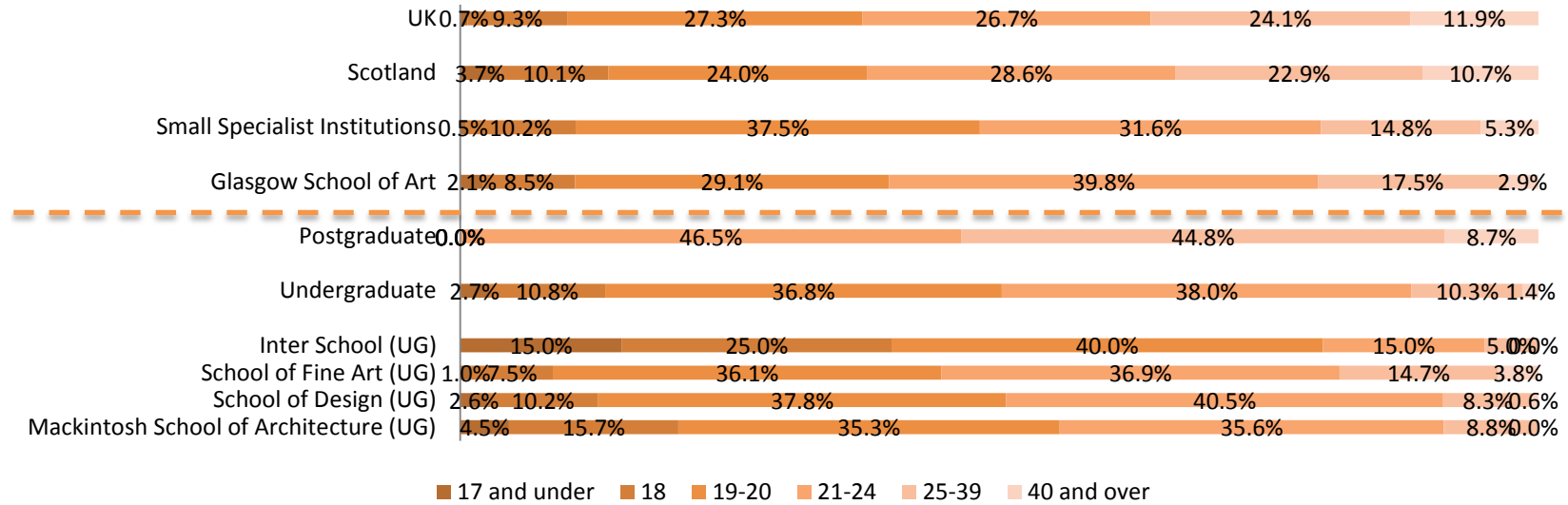
School of Design (UG)



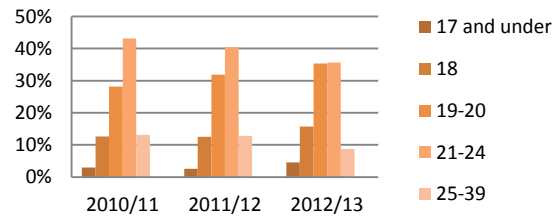
School of Fine Art (UG)



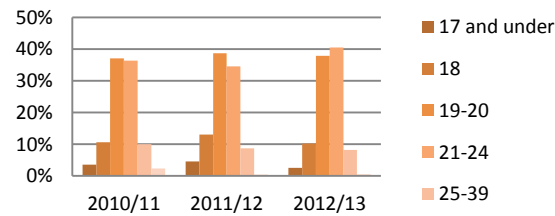
Age (all students)



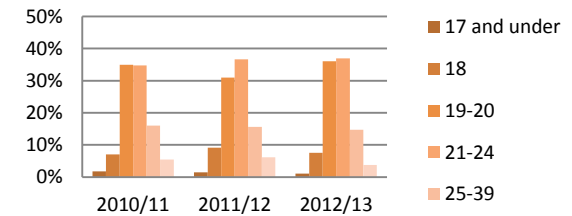
School of Architecture (UG)



School of Design (UG)



School of Fine Art (UG)



Ethnicity (All Students)					
	White	BME		White	BME
2012-13	1530	325		82.5%	17.5%
2011-12	1591	338		82.5%	17.5%
2010-11	1526	314		82.9%	17.1%
Ethnicity (UK Domiciled)					
	White	BME		White	BME
Mackintosh School of Architecture (UG)	220	30		88.0%	12.0%
School of Design (UG)	514	33		94.0%	6.0%
School of Fine Art (UG)	324	22		93.6%	6.4%
Inter School (UG)	10	2		83.3%	16.7%
Undergraduate	1068	87		92.5%	7.5%
Postgraduate	170	17		90.9%	9.1%
Glasgow School of Art	1238	104		92.3%	7.7%
Small Specialist Institutions	22860	4495		83.6%	16.4%
Scotland	150085	12295		92.4%	7.6%
UK	1507845	368385		80.4%	19.6%

Appendix: Raw data

Disability					
	Not Known to be Disabled	Declared Disabled		Not Known to be Disabled	Declared Disabled
Mackintosh School of Architecture (UG)	285	46		86.1%	13.9%
School of Design (UG)	580	118		83.1%	16.9%
School of Fine Art (UG)	341	134		71.8%	28.2%
Inter School (UG)	18	2		90.0%	10.0%
Undergraduate	1224	300		80.3%	19.7%
Postgraduate	352	46		88.4%	11.6%
Glasgow School of Art	1576	346		82.0%	18.0%
Small Specialist Institutions	26875	6430		80.7%	19.3%
Scotland	196815	17935		91.6%	8.4%
UK	2118600	221190		90.5%	9.5%

Appendix: Raw data

Gender	Male	Female	Other*	Male	Female	Other
Mackintosh School of Architecture (UG)	186	145	0	56.2%	43.8%	0.0%
School of Design (UG)	219	484	0	31.2%	68.8%	0.0%
School of Fine Art (UG)	151	326	0	31.7%	68.3%	0.0%
Inter School (UG)	12	8	0	60.0%	40.0%	0.0%
Undergraduate	568	963	0	37.1%	62.9%	0.0%
Postgraduate	176	226	0	43.8%	56.2%	0.0%
Glasgow School of Art	744	1189	0	38.5%	61.5%	0.0%
Small Specialist Institutions	12595	20710	0	37.8%	62.2%	0.0%
Scotland	92085	122470	230	42.9%	57.0%	0.1%
UK	1025030	1314820	425	43.8%	56.2%	0.0%
*University of Glasgow returned 230 'other' sex students to HESA						

Appendix: Raw data

Domicile	UK	EU	Overseas	UK	EU	Overseas
Mackintosh School of Architecture (UG)	251	40	40	75.8%	12.1%	12.1%
School of Design (UG)	551	60	92	78.4%	8.5%	13.1%
School of Fine Art (UG)	352	45	80	73.8%	9.4%	16.8%
Inter School (UG)	12	2	6	60.0%	10.0%	30.0%
Undergraduate	1166	147	218	76.2%	9.6%	14.2%
Postgraduate	192	55	155	47.8%	13.7%	38.6%
Glasgow School of Art	1358	202	373	70.3%	10.5%	19.3%
Small Specialist Institutions	27545	2355	3405	82.7%	7.1%	10.2%
Scotland	167840	18640	28305	78.1%	8.7%	13.2%
UK	1915015	125290	299970	81.8%	5.4%	12.8%

Appendix: Raw data

Age Profile (age as at 31/08/2012)													
	17 and under	18	19-20	21-24	25-39	40 and over		17 and under	18	19-20	21-24	25-39	40 and over
School of Architecture (UG)	15	52	117	118	29	0		4.5%	15.7%	35.3%	35.6%	8.8%	0.0%
School of Design (UG)	18	72	266	285	58	4		2.6%	10.2%	37.8%	40.5%	8.3%	0.6%
School of Fine Art (UG)	5	36	172	176	70	18		1.0%	7.5%	36.1%	36.9%	14.7%	3.8%
Inter School (UG)	3	5	8	3	1	0		15.0%	25.0%	40.0%	15.0%	5.0%	0.0%
Undergraduate	41	165	563	582	158	22		2.7%	10.8%	36.8%	38.0%	10.3%	1.4%
Postgraduate	0	0	0	187	180	35		0.0%	0.0%	0.0%	46.5%	44.8%	8.7%
Glasgow School of Art	41	165	563	769	338	57		2.1%	8.5%	29.1%	39.8%	17.5%	2.9%
Small Specialist Institutions	180	3385	12475	10530	4935	1770		0.5%	10.2%	37.5%	31.6%	14.8%	5.3%
Scotland	7925	21660	51440	61475	49180	23080		3.7%	10.1%	24.0%	28.6%	22.9%	10.7%
UK	16145	217560	639735	624875	563190	278160		0.7%	9.3%	27.3%	26.7%	24.1%	11.9%